

# #Celine\_Dion - EFnet - IRC Tutorial

## I. Configure And Use mIRC

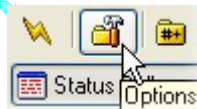
### 1. Get The Program

First you will need to download and install a program called **mIRC** to connect to the IRC (Internet Relay Chat) Network. You can download the latest version here: <http://www.mirc.com/get.html>

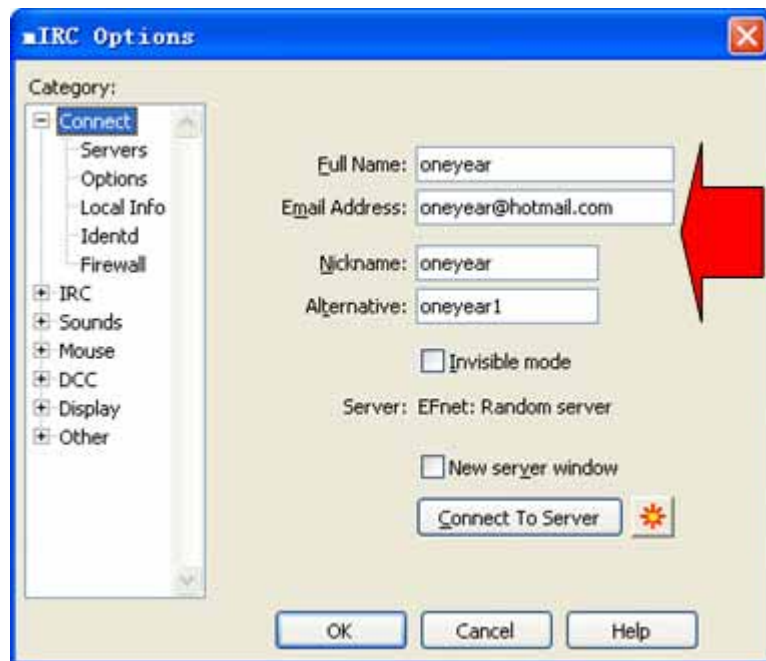


### 2. Set Up Connection

2.1- Start the program and look at the toolbar. You will see several icons, starting with those three:

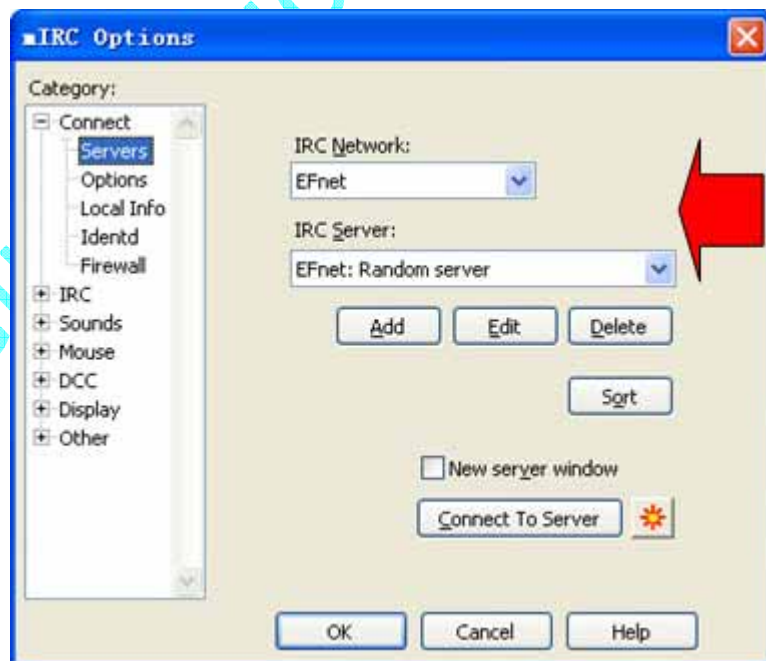


2.2- Click on the 2nd Icon 'Options' from the left, and the following screen will appear:



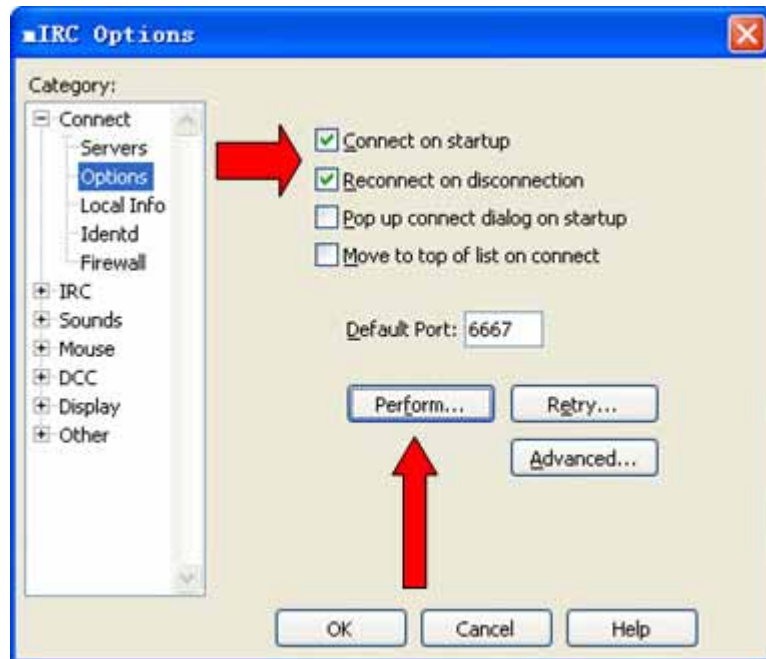
Fill in your details ('Full Name', 'Email Address'), and pick a 'Nickname'. Your nickname is the name people in IRC will see when you are connected. You are free to choose any nickname you like, up to 9 characters long. Do not use spaces and avoid unusual ASCII characters in your nickname. It is also very common to find people that use the same nickname and you may be asked or choose to switch nicknames to avoid confusion. The 'Alternative' nickname will be used if the first one is taken. You do not have to give your real name or email

2.3- Select 'Connect' -> 'Servers' on the left panel, and the following screen will appear:



Choose 'EFnet' for 'IRC Network', and choose 'IRC Server' to 'EFnet: Random server'. Also you can choose 'IRC Server' to any EFnet server according to your location (AU = Australia; CA = Canada; EU = Europe; US = United States; etc.) , just take one close to where you live.

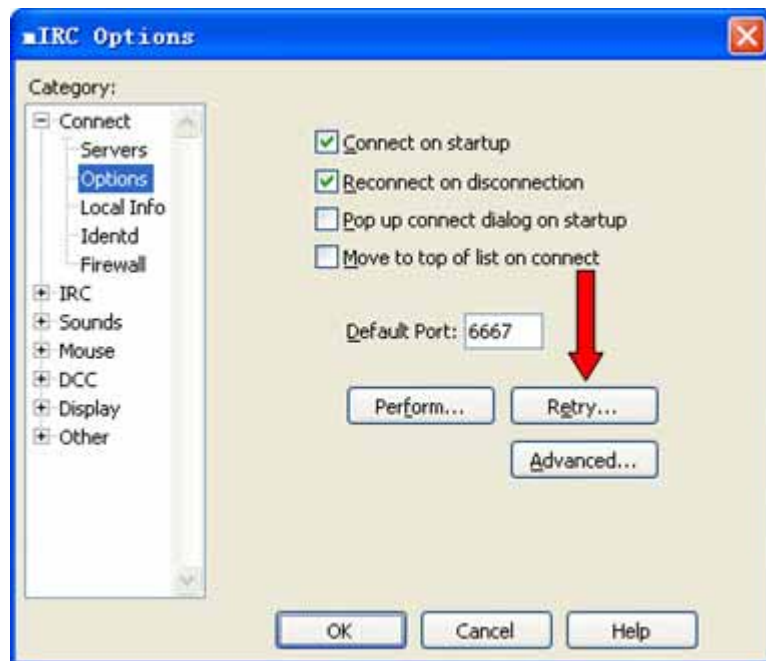
2.4- Select 'Connect' -> 'Options' on the left panel. Check 'Connect on startup', 'Reconnect on disconnect' as the following screen cap:



Click 'Perform' button, and the following screen will appear:



Check 'Enable perform on connect', and input these two lines '/pdcc on', '/fsend on' in 'Perform commands' as the above screen cap, click 'OK' to finish.

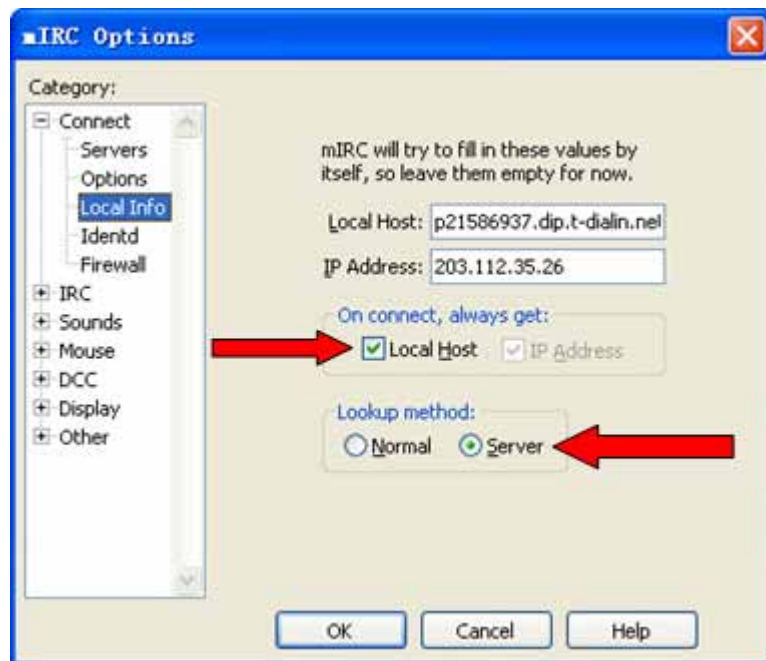


Then click 'Retry' button, and the following screen will appear:



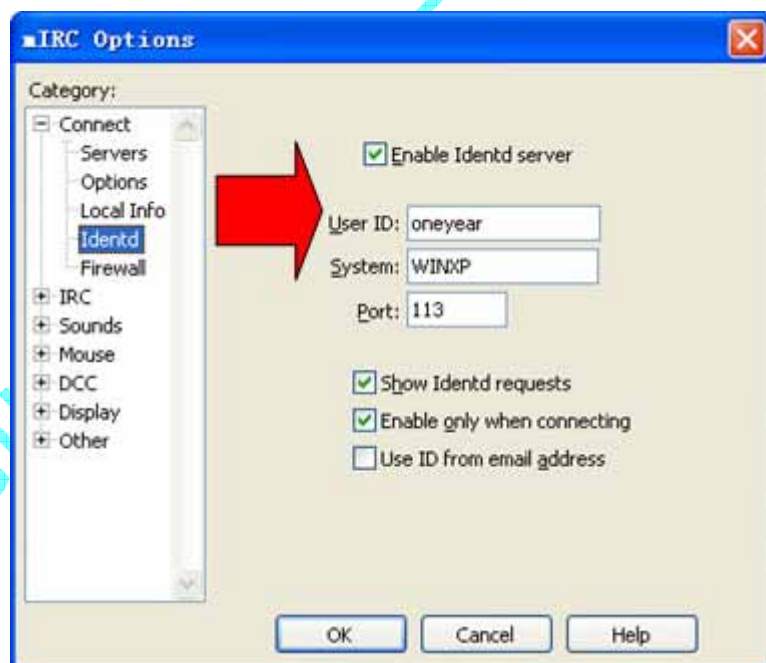
Check 'Enable connect retry' and 'Try next server in group', set 'If not connected in' as '15' secs, 'Retry connection' as '99' times, 'Retry delay' as '3' secs. Then click 'OK'.

2.5- Select 'Connect' -> 'Local Info' on the left panel, and the following screen will appear:



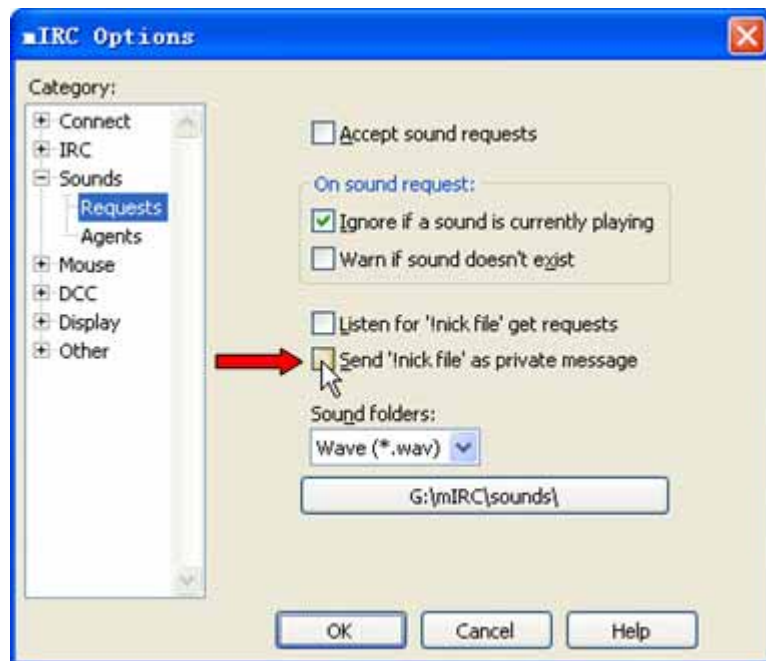
You need to check 'Local Host' and select 'Server' as 'Lookup method'. And the top 2 boxes should be filled in automatically when you connect to IRC server. Then click 'OK' to finish.

2.6- Select 'Connect' -> 'Identd' on the left panel, and the following screen will appear:



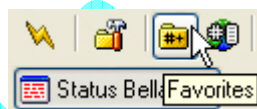
Check 'Enable Identd server' and input your 'User ID' to let mIRC register your user ID to the IRC server.

2.7- Select 'Sounds' -> 'Requests' on the left panel. Make sure uncheck the 'Send !nick file as private message' option.



### 3. Add Our Channel To Favorites

3.1- Click on the 3rd Icon 'Favorites' from the left on toolbar:



3.2- The following window will now appear:



3.3- Uncheck the 'Pop up favorites on connect' option, then click on the 'Add' Button, the following window will appear:



3.4- Fill out the name of our 'Channel': '#Celine\_Dion' and input 'Password': 'celinerocks' (all letters of the password are lowercases), add any 'Description' you like. Make sure the 2 Options ('Join on connect', 'Minimize on join') on the right are checked, this will allow you to join the channel automatically every time you connect to IRC server. Then click on 'Add' Button, the following window will appear:



Select 'EFnet', click 'OK' to finish.

## 4. Connect To The IRC network

4.1- Click on the Lightning button 'Connect' (the first from the left) on toolbar to connect.



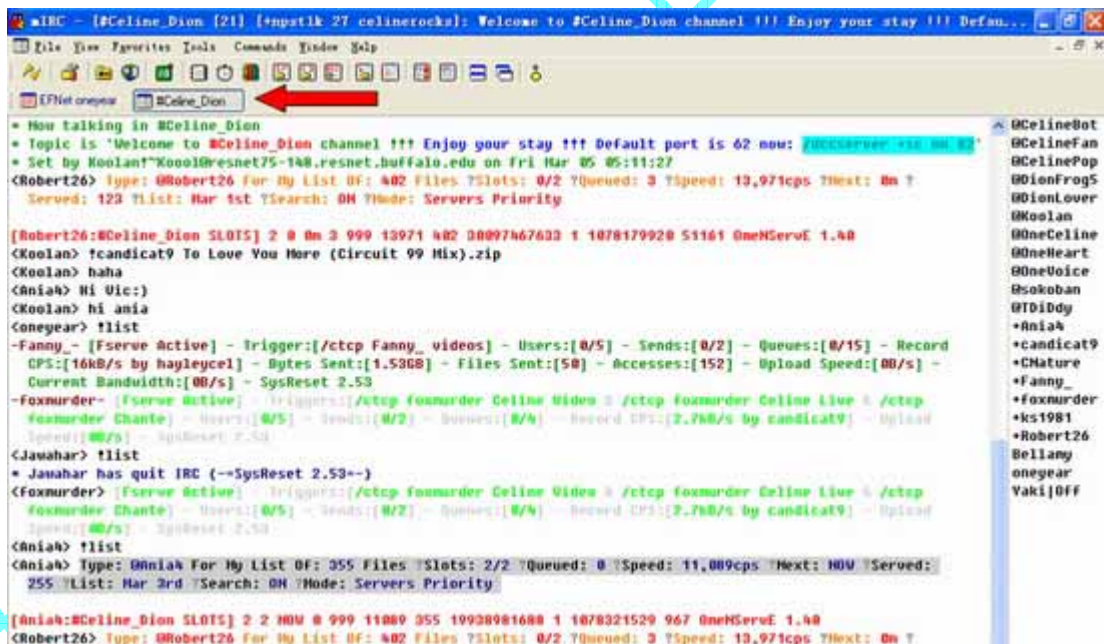
Be patient as mIRC connects you to a server. You will see the progress of connection in the Status Window:

```

*IRC - [Status: oneyear [!+] on EFNet (irc.dks.ca:6667)]
* Connecting to irc.efnet.net (6667)
-irc.efnet.net- *** Looking up your hostname...
-irc.efnet.net- *** Checking Ident
-irc.efnet.net- *** Couldn't look up your hostname
* Identd request from 204.92.73.10
* Identd replied: 30143, 6667 : USERID : WINKP : oneyear
-irc.efnet.net- *** Got Ident response
Welcome to the EFNet Internet Relay Chat Network oneyear
Your host is irc.dks.ca[204.92.73.10/6667], running version ircd-ratbox-1.3-1.dks
This server was created Sat Feb 28 2004 at 04:16:05 EST
irc.dks.ca ircd-ratbox-1.3-1.dks oiuszcerkfydnxbaug12 biklimopstvei bklove1
STD=I-d STATUSMSG=@+ RMODK EXCEPTS IMEX HIDES=4 MIXCHANNELS=50 MAXBANS=100 MAXTARGETS=6 NICKLEN=9 TOPICLEN=120 KICKLEN=120
are supported by this server
CHANYPES=@# PREFIX=(ou)@+ CHANMODES=eIb,k,l,impst NETWORK-EFNet CASEMAPPING=rfc1459 CHARSET=ascii COLLERID ETRAGE
WALLCHOPS are supported by this server
-
There are 5123 users and 110917 invisible on 50 servers
365 IRC Operators online
45077 channels formed
I have 5162 clients and 1 servers
-
Current local users: 5162 Max: 6393
Current global users: 116040 Max: 131793
-
Highest connection count: 6394 (6393 clients) (298217 connections received)
-
Message of the Day, irc.dks.ca

```

4.2- Once it connects, it should automatically join #Celine\_Dion channel. Click the '#Celine\_Dion' You will see the channel window:



```

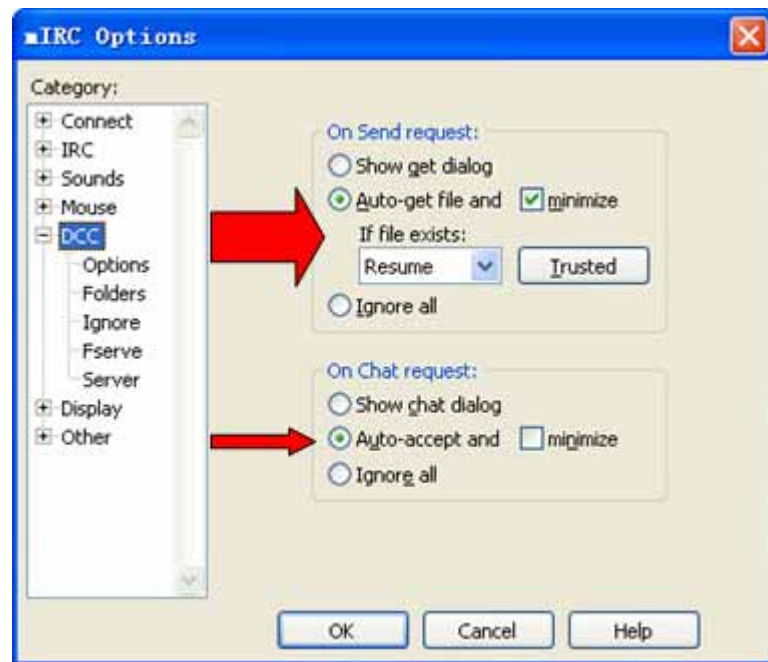
*IRC - [#Celine_Dion [21] [+npstik 27 celineerocks]: Welcome to #Celine_Dion channel !!! Enjoy your stay !!! Defau...
* Now talking in #Celine_Dion
* Topic is 'Welcome to #Celine_Dion channel !!! Enjoy your stay !!! Default port is 62 now: yuccarover:333.00.00'
* Set by Koolan!*Koolan@resnet75-148.resnet.buffalo.edu on Fri Mar 05 05:11:27
<Robert26> type: @Robert26 For My List Of: 402 Files TSlots: 0/2 TQueued: 3 TSpeed: 13,971cps TNext: @n T
Served: 123 TList: Mar 1st TSearch: @N TMode: Servers Priority
[Robert26:#Celine_Dion SLOTS] 2 0 @n 3 999 13971 402 00097467633 1 1078179920 51161 OneMServE 1.40
<Koolan> tccandicat9 To Love You More (Circuit 99 Mix).zip
<Koolan> haha
<Aniah> Hi Uic:)
<Koolan> hi ania
<oneyear> tlist
-Fanny_- [Fserve Active] - Trigger:[/ctcp Fanny_videos] - Users:[0/5] - Sends:[0/2] - Queues:[0/15] - Record
CPS:[16kB/s by hayleycel] - Bytes Sent:[1.53GB] - Files Sent:[50] - Accesses:[152] - Upload Speed:[00/s] -
Current Bandwidth:[00/s] - SysReset 2.53
-Foxmurder- [Fserve Active] - Triggers:[/ctcp foxmurder Celine Video & /ctcp foxmurder Celine Live & /ctcp
foxmurder Chante] - Users:[0/5] - Sends:[0/2] - Queues:[0/4] - Record CPS:[2.7kB/s by candicat9] - Upload
Speed:[00/s] - SysReset 2.53
<Jawahar> tlist
* Jawahar has quit IRC (--SysReset 2.53--)
<Foxmurder> [Fserve Active] - Triggers:[/ctcp foxmurder Celine Video & /ctcp foxmurder Celine Live & /ctcp
foxmurder Chante] - Users:[0/5] - Sends:[0/2] - Queues:[0/4] - Record CPS:[2.7kB/s by candicat9] - Upload
Speed:[00/s] - SysReset 2.53
<Aniah> tlist
[Aniah:#Celine_Dion SLOTS] 2 2 @n 0 999 11009 355 19930981680 1 1078321529 967 OneMServE 1.40
<Robert26> type: @Robert26 For My List Of: 402 Files TSlots: 0/2 TQueued: 3 TSpeed: 13,971cps TNext: @n T

```

## 5. Accepting File Types

5.1- In order to download files from the servers, you must set DCC options first. If you don't, the program will NOT download files from servers.

5.2- Select 'Tools' ->'Options' from menu, and select 'DCC' on the left panel, the following window will appear:

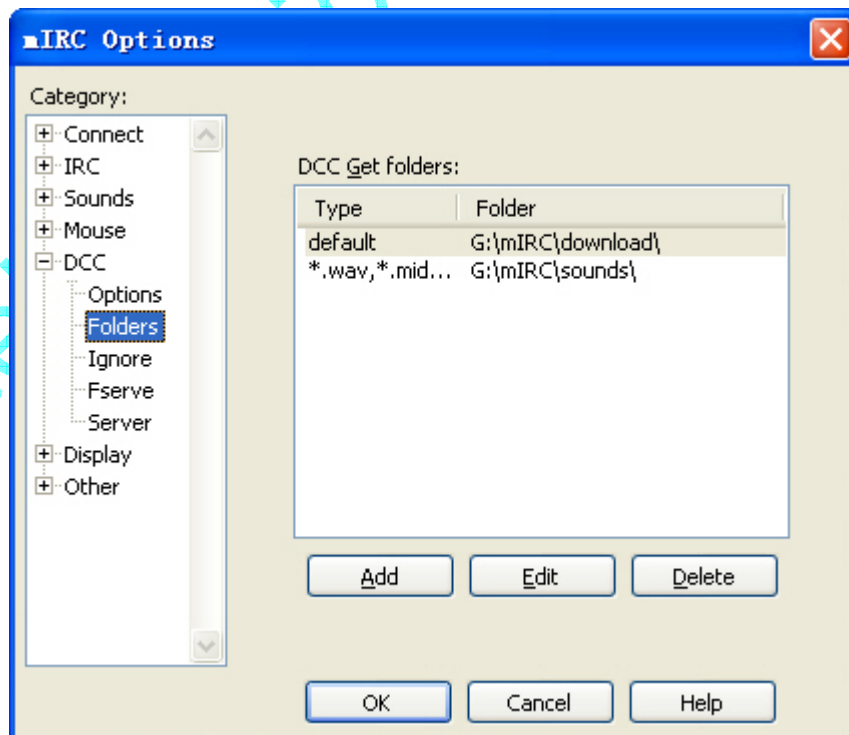


'On Send request' select: 'Auto-get file & minimize'

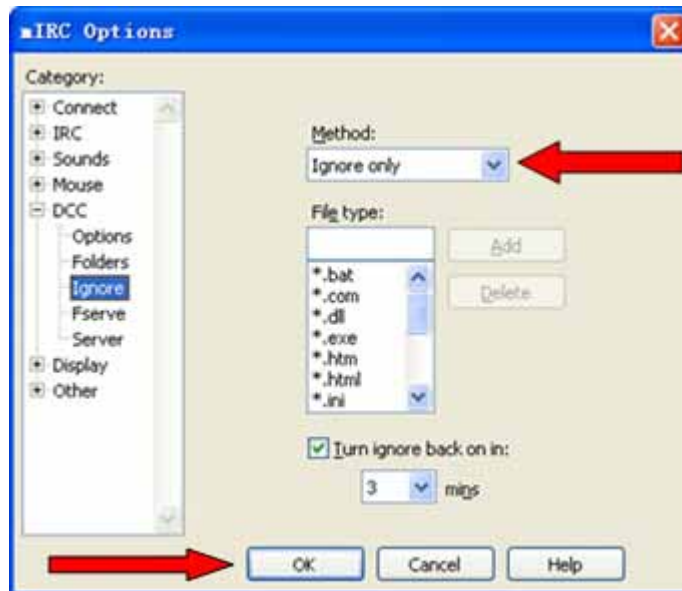
'If file exist' select: 'Resume'

'On Chat request' select: 'Auto-accept'

5.3- In the Left panel select 'DCC' -> 'Folders', a new window open. You can set which folder to store files you get from IRC by file types:



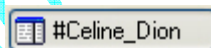
5.4- In the Left panel select 'DCC' -> 'Ignore', a new window open:



Change 'Method' to 'Ignore only', then your IRC will only ignore to receive the file types set here (some not safe to receive file types). You will now be able to download .mpg, .mp3, .m2v files and other media files from servers.

## 6. Get Files From FServers (File Servers)

6.1- Click on the channel window to see the channel screen:



6.2- On the text line below, type '!list' + 'Enter'

```
* Now talking in #Celine_Dion
* Topic is ' New version of H
: Koolan, Bellamy, sokoban, G
* Set by Bellamy!Bellamy@219.
!list
```

6.3- A list of FServers online will appear with general statistics and a 'trigger' for each one.

```
<Bellamycn> !list
-jjjefff20- [Fserve Active] - Trigger:[/ctcp jjjefff20 Celine Stuff] - Users:[0/5] - Sends:[0/2] - Queues:[0/15]
- Record CPS:[4.3kB/s by sandywang] - Bytes Sent:[17kB] - Files Sent:[1] - Accesses:[2] - Upload Speed:[0B/s]
- Current Bandwidth:[12.9kB/s] - SysReset 2.53
-CelineThe- [Fserve Active] - Trigger:[/ctcp CelineThe Videos of our loved Celine] - Users:[0/5] - Sends:[0/1] -
Queues:[0/15] - Record CPS:[12.8kB/s by ShelServ] - Bytes Sent:[6.08GB] - Files Sent:[204] - Accesses:[519] -
Upload Speed:[0B/s] - Current Bandwidth:[0B/s] - SysReset 2.53
-LT-Sam- [Fserve Active] - Triggers:[/ctcp LT-Sam CelineStuff-Music & /ctcp LT-Sam CelineStuff-Videos] -
Users:[0/5] - Sends:[1/2] - Queues:[0/15] - Record CPS:[14.7kB/s by hayleycel] - Bytes Sent:[23.2MB] - Files
Sent:[7] - Accesses:[26] - Upload Speed:[14.1kB/s] - Current Bandwidth:[16kB/s] - SysReset 2.53
-Bellamy- [Fserve Active] - Triggers:[/ctcp Bellamy !celine video(1/10) & /ctcp Bellamy !celine music(1/10)] -
Users:[0/5] - Record CPS:[67.2kB/s by weiwuu] - Bytes Sent:[213.74GB] - Files Sent:[4715] - Accesses:[7413] -
Upload Speed:[11.6kB/s]
```

Here is an example:

-Bellamy- [Fserve Active] - Triggers: [/ctcp Bellamy !celine video(1/10) & /ctcp Bellamy !celine music(1/10)] – Users: [0/5] - Record CPS: [67.2kB/s by weivvv] - Bytes Sent: [213.74GB] - Files Sent: [4715] - Accesses: [7413] - Upload Speed: [11.6kB/s]

'Triggers' is the command need to be typed (the text with different color)

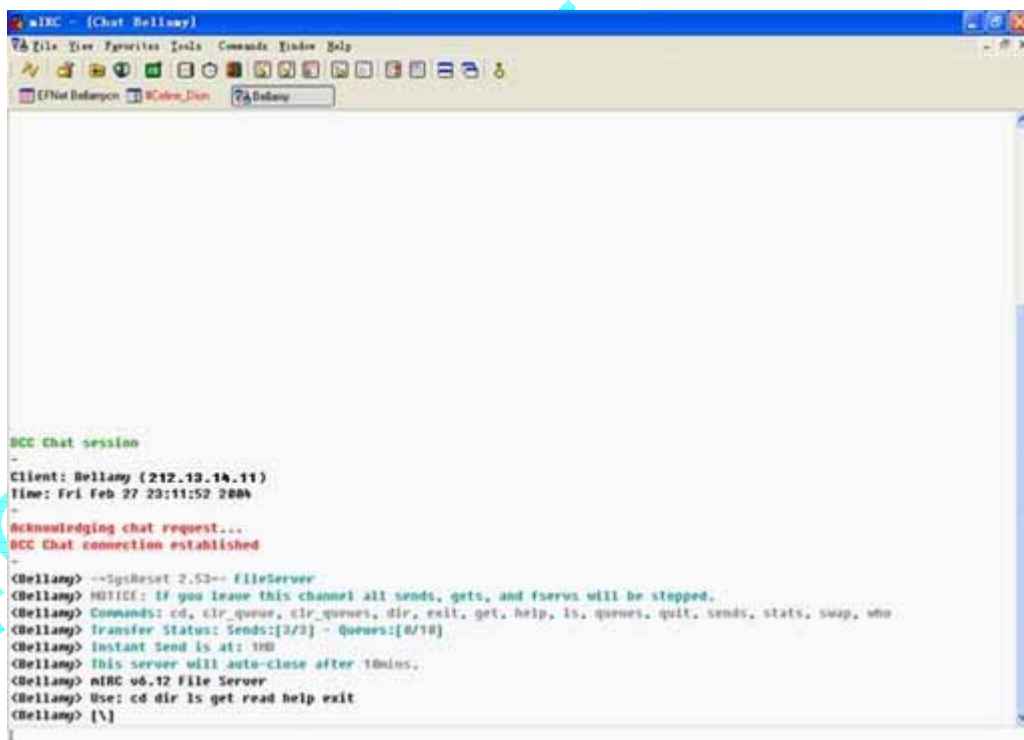
6.4- Find the 'trigger' of the FServer you would like to access (in this example):

'/ctcp Bellamy !celine video' or '/ctcp Bellamy !celine music'

Type '/ctcp Bellamy !celine music' and press 'Enter'. The trigger text will appear in red, like this:

```
<Bellamycn> !list bellamy
-Bellamy- [Fserve Active] - Triggers:[/ctcp Bellamy !celine video(0/10) & /ctcp Bellamy !celine music(0/10)] -
  Users:[0/5] - Record CPS:[67.2kB/s by weivvv] - Bytes Sent:[213.74GB] - Files Sent:[4715] - Accesses:[7417] -
  Upload Speed:[18.2kB/s]
-Bellamy- Message:[Get all files served by HTTP here: http://largecarnivores.punctro.net/irc.html Bookmark this
  page. Please don't post the links anywhere] - SysReset 2.53
-> [Bellamy] !CELINE music
-Bellamy- DCC Fserve ( 212.113.24.11 )
```

6.5- This will take you to a new server window. Through this window you will be able to queue files. It is very much like DOS in its commands and here is a list of the available commands:



```
mIRC - (Chat Bellamy)
File Edit Favorites Tools Console Window Help
[Icons]
[Usernames]
[Channels]

BCC Chat session
-
Client: Bellamy (212.113.24.11)
Time: Fri Feb 27 23:11:52 2004
-
Acknowledging chat request...
BCC Chat connection established
-
(Bellamy) --SysReset 2.53-- FileServer
(Bellamy) NOTICE: If you leave this channel all sends, gets, and fserve will be stopped.
(Bellamy) Commands: cd, clr_queue, clr_queues, dir, exit, get, help, ls, queues, quit, sends, stats, swap, who
(Bellamy) Transfer Status: Sends:[3/3] - Queues:[0/10]
(Bellamy) Instant Send is at: 100
(Bellamy) This server will auto-close after 10mins.
(Bellamy) mIRC v6.12 File Server
(Bellamy) Use: cd dir ls get read help exit
(Bellamy) [\]
```

## Command - Function List

**cd** - Change your current directory [ 'cd..' ' to go up a directory, 'cd foldername' to go into a directory ]

**clr\_queue** - Deletes a queue of yours from the file server. [example: 'clr\_queue 1']

**clr\_queues** - Deletes all of your queues from the file server  
**dir** - Lists all the files in current directory  
**exit** – Exit FServer  
**get** - Gets file from the file server [ 'get filename.extension' ]  
**help** – Help of FServer  
**ls** - Wide directory listing  
**queues** - Displays server queue status  
**quit** – Same as exit  
**sends** - Displays server send status  
**stats** - Displays current server statistics  
**swap** - allows queues to be swapped. [ can be disabled ]  
**who** - Show users on server

6.6- When you get into the FServer, first type 'dir' + 'Enter' to list all the folders and files in the FServer, then all the folders and files listed on screen.

```

mIRC - [Chat Bellamy]
OCC Chat session
Client: Bellamy (202.119.14.26)
Time: Fri Mar 05 11:08:20 2004
Acknowledging chat request...
OCC Chat connection established
Bellamy> --SysReset 2.53-- FileServer
Bellamy> NOTICE: If you leave this channel all sends, gets, and fserver will be stopped.
Bellamy> Commands: cd, clr_queue, clr_queues, dir, exit, get, help, ls, queues, quit, sends, stats, swap, who
Bellamy> Transfer Status: Sends:[3/3] - Queues:[1/10]
Bellamy> Instant Send is at: 100
Bellamy> This server will auto-close after 10mins.
Bellamy> mIRC v6.12 File Server
Bellamy> Use: cd dir ls get read help exit
Bellamy> [\]
oneyear> dir
Bellamy> SysReset 2.53
Bellamy> [\*.*)
Bellamy> 1981 CHANTE NOEL
Bellamy> 1981 LA VOIX DU BON DIEU
Bellamy> 1982 TELLEMENT J'AI D'AMOUR
Bellamy> 1983 CHANTS ET COMTES DE NIEL
Bellamy> 1983 DU SOLEIL AU COEUR
Bellamy> 1983 LES CHEMINS DE MA MAISON
Bellamy> 1984 LES DISSEAUX DU DOMICILE
Bellamy> 1984 MELANIE
Bellamy> 1985 C'EST POUR TOI
Bellamy> 1985 EN CONCERT
Bellamy> 1987 INCOGNITO
Bellamy> 1990 UNISON
Bellamy> 1991 DES MOTS QUI SONNENT
Bellamy> 1992 CELINE DION
Bellamy> 1993 THE COLOUR OF MY LOVE
dir
  
```

6.7- The words in capital letters without file extension are folders/directories. For example: '1981 CHANTE NOEL' here. You need to type 'cd 1981 chante noel' + 'Enter' to get into that folder.

```

#
<Bellamy> End of list
<oneyear> cd 1981 chante noel
<Bellamy> SysReset 2.53
<Bellamy> [\1981 chante noel]
cd 1981 chante noel
  
```

6.8- Then type 'dir' + 'Enter' again to list all the folders and files in this folder.

```

<Bellamy> End of list
<oneyear> cd 1981 chante noel
<Bellamy> SysReset 2.53
<Bellamy> [\1981 chante noel]
<oneyear> dir
<Bellamy> SysReset 2.53
<Bellamy> [\1981 chante noel\*.*)
<Bellamy> ..
<Bellamy> celine dion - chante noel - 01 - glory alleluia.mp3 4.13 mb
<Bellamy> celine dion - chante noel - 02 - le p'tit renne au nez rouge.mp3 2.48 mb
<Bellamy> celine dion - chante noel - 03 - petit papa noel.mp3 5.54 mb
<Bellamy> celine dion - chante noel - 04 - sainte nuit.mp3 4.94 mb
<Bellamy> celine dion - chante noel - 05 - les enfants oublies.mp3 5.36 mb
<Bellamy> celine dion - chante noel - 06 - noel blanc.mp3 2.57 mb
<Bellamy> celine dion - chante noel - 07 - pere noel arrive ce soir.mp3 3.63 mb
<Bellamy> celine dion - chante noel - 08 - j'ai vu maman embrasser le pere noel.mp3 4.85 mb
<Bellamy> celine dion - chante noel - 09 - promenade en traineau.mp3 3.34 mb
<Bellamy> celine dion - chante noel - 10 - joyeux noel.mp3 4.66 mb
<Bellamy> chante noel.m3u 1.03 kb
<Bellamy> End of list
dir|

```

6.9- The words listed in lowercases with file extension are filenames. For example: 'celine dion - chante noel - 01 - glory alleluia.mp3' here. Once you find the file what you do want, you must type: 'get filename.extension' to get the file. For example: 'get celine dion - chante noel - 01 - glory alleluia.mp3' + 'Enter'

```

<Bellamy> End of list
<oneyear> cd 1981 CHANTE NOEL
<Bellamy> SysReset 2.53
<Bellamy> [\1981 chante noel]
<oneyear> dir
<Bellamy> SysReset 2.53
<Bellamy> [\1981 chante noel\*.*)
<Bellamy> ..
<Bellamy> celine dion - chante noel - 01 - glory alleluia.mp3 4.13 mb
<Bellamy> celine dion - chante noel - 02 - le p'tit renne au nez rouge.mp3 2.48 mb
<Bellamy> celine dion - chante noel - 03 - petit papa noel.mp3 5.54 mb
<Bellamy> celine dion - chante noel - 04 - sainte nuit.mp3 4.94 mb
<Bellamy> celine dion - chante noel - 05 - les enfants oublies.mp3 5.36 mb
<Bellamy> celine dion - chante noel - 06 - noel blanc.mp3 2.57 mb
<Bellamy> celine dion - chante noel - 07 - pere noel arrive ce soir.mp3 3.63 mb
<Bellamy> celine dion - chante noel - 08 - j'ai vu maman embrasser le pere noel.mp3 4.85 mb
<Bellamy> celine dion - chante noel - 09 - promenade en traineau.mp3 3.34 mb
<Bellamy> celine dion - chante noel - 10 - joyeux noel.mp3 4.66 mb
<Bellamy> chante noel.m3u 1.03 kb
<Bellamy> End of list
<oneyear> get celine dion - chante noel - 01 - glory alleluia.mp3
<Bellamy> Adding your file to queue slot 2. The file will send when the next send slot is open.
get celine dion - chante noel - 01 - glory alleluia.mp3

```

Then the FServer tell you 'Adding your file to queue slot 2. The file will send when the next send slot is open. '. This means all send slots are full right now, your request to get the file already at queue slot 2. The file will send to you when there's free send slot.

The Fserver may tell you these messages too:

### **Sending File.**

This message means there's free send slot now, so the file you request send to you immediately.

### **That file is already sending!**

This message means the file you request is already sending

Invalid file name, please use the form: < get filename.ext >  
This server does NOT handle wildcards ( \*.\* )

This message means the file name you typed is wrong. You need to check again to make sure you don't type wrong. You can use copy/paste function to make sure you typed correct. And maybe you use the 'get' command with a folder name. The words in capital letters without file extension are folders/directories. Only words listed in lowercases with file extension are file names.

6.10- After request files from this folder, maybe you want to go back to the upper directory. Type 'cd..' + 'Enter' to go up a directory.

```
<Bellamy> End of list
<oneyear> cd 1981 CHANTE NOEL
<Bellamy> SysReset 2.53
<Bellamy> [\1981 chante noel]
<oneyear> dir
<Bellamy> SysReset 2.53
<Bellamy> [\1981 chante noel\*.*)
<Bellamy> ..
<Bellamy> celine dion - chante noel - 01 - glory alleluia.mp3 4.13 mb
<Bellamy> celine dion - chante noel - 02 - le p'tit renne au nez rouge.mp3 2.48 mb
<Bellamy> celine dion - chante noel - 03 - petit papa noel.mp3 5.54 mb
<Bellamy> celine dion - chante noel - 04 - sainte nuit.mp3 4.94 mb
<Bellamy> celine dion - chante noel - 05 - les enfants oublies.mp3 5.36 mb
<Bellamy> celine dion - chante noel - 06 - noel blanc.mp3 2.57 mb
<Bellamy> celine dion - chante noel - 07 - pere noel arrive ce soir.mp3 3.63 mb
<Bellamy> celine dion - chante noel - 08 - j'ai vu maman embrasser le pere noel.mp3 4.85 mb
<Bellamy> celine dion - chante noel - 09 - promenade en traineau.mp3 3.34 mb
<Bellamy> celine dion - chante noel - 10 - joyeux noel.mp3 4.66 mb
<Bellamy> chante noel.n3u 1.03 kb
<Bellamy> End of list
<oneyear> get celine dion - chante noel - 01 - glory alleluia.mp3
<Bellamy> Adding your file to queue slot 2. The file will send when the next send slot is open.
<oneyear> cd..
<Bellamy> SysReset 2.53
<Bellamy> [\]
cd..
```

6.11- Repeat 6.6 - 6.10 to request other files.

6.12- General info about 'queues'

When you 'get' a file from a server, it will place you in a waiting list that is called the 'queue list'. When there's free send slot, the server will send you the file you requested. And you can track your place in the 'queue list' by typing 'queues' in the FServer window.

After you queued a file in the file server, you can close the FServer window. You don't need to be on the server to have the file sent to you. Note that if you close the Channel window (#Celine\_Dion). Your queues and sends maybe erased/lost.

Each server is separate. They may have same files, but they are not linked amongst themselves. You may have a queue waiting in EACH FServer.

## 7. Get Files From The OmeNServe With Files List

7.1- Some other users in #Celine\_Dion Channel offer another way to download the files. They use OmeNServe to share files, making your available to download a files list.

In this case, in the #Celine\_Dion channel window, you will see many messages like this:

```
<mmanuzzi> Please share your files, use the newest OmeNServe 2.02, do it easy for the others - Serving Music Vidz & Mp3's # @ and +v have priority Type: @mmanuzzi For My List Of: 777 Files ?Slots: 0/2 ?Queued: 0 ?Speed: 9,011cps ?Next: 85m ?Served: 1,449 ?List: Feb 20th ?Sea  
[mmanuzzi:#Celine_Dion SLOTS] 2 0 85m 0 999 9011 777 17830627668 1 1077290584 172514 OmeNServe v2.02  
<Dreamerjj> Type: @Dreamerjj For My List Of: 169 Files ?Slots: 2/2 ?Queued: 0 ?Speed: 4,183cps ?Next: NOW ?Served: 54 ?List: Feb 27th ?Search: ON ?Mode: Servers Priority
```

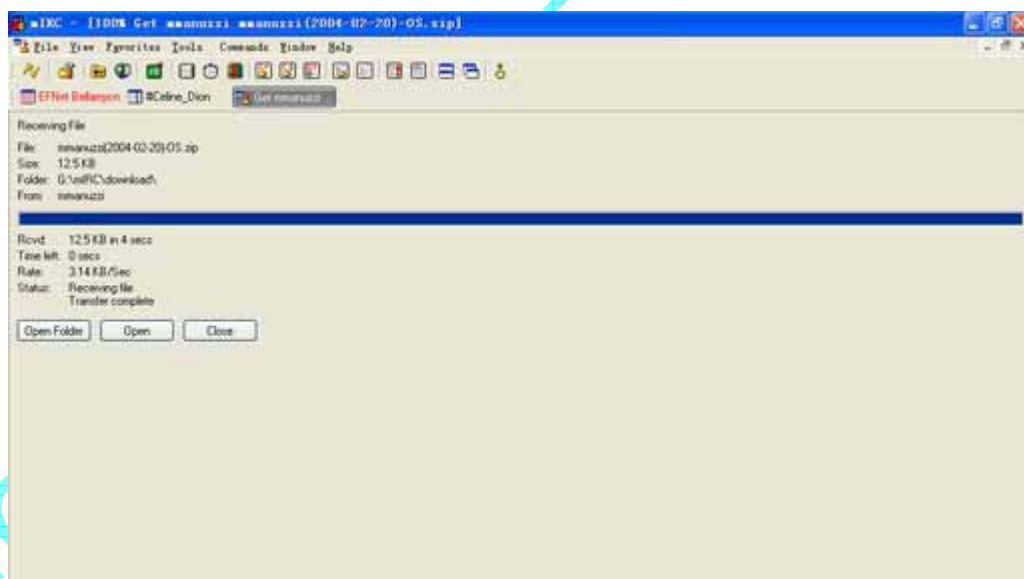
7.2- For example, the user 'mmanuzzi', we can read that: type '@' + 'his nick name' for his list

```
<mmanuzzi> Please share your files, use the newest OmeNServe 2.02, do it easy for the others - Serving Music Vidz & Mp3's # @ and +v have priority Type: @mmanuzzi For My List Of: 777 Files ?Slots: 0/2 ?Queued: 0 ?Speed: 8,823cps ?Next: 60m ?Served: 1,449 ?List: Feb 20th ?Sea  
@mmanuzzi|
```

Type '@mmanuzzi' + 'Enter', we will receive a confirmation:

```
-mmanuzzi- Request Accepted List Has Been Placed In The Priority Queue At Position 1 OmeNServe v2.02
```

7.3- Then his file list will send to you soon. A new window will open, showing the file transfer status:



7.4- Once the files transfer end, click 'Open Folder' find the list file send to you. If it's a .zip file, extract the .txt file from it first. Now will open the text file list, our treasure most important, the text file listing the audio and video files, that user let us download.

Any file list, tell us, in the beginning, time of release & other information. We must check the entire file list. Someone's list ordered by alphabetically, others by singer, others by folder, etc.

```
OmeNServE v2.02 ?OmeN? & ListMagic v1.0 ?mp3oholic ( http://www.omeNScripts.org )
List of 777 Files (16.6 GB) generated on 20th Feb 2004 in 0m03s ( 259 Files Per Second )

To request a file, copy/paste to the channel... !?OmeN? FILENAME eg. !?OmeN? Madonna - Holiday.mp3
Or try the ultimate requesting script --- AutoGet --- Available from the above website

Thanks ASMusic (Alejandro) & Broughty (Marja) sysops Wideoshall channel for teach me to serve.

To Request A File, Copy/Paste To The Channel...
!mmanuzzi FILENAME eg. !mmanuzzi Celine Dion - Fly.mp3

-----
WELCOME: Chat, share & exchange your videos & mp3's files at -> #Celine_Dion channel -> EFNet network

PLEASE SERVING ON THE #Celine_Dion channel, is easy, secure, and a lot of people (ne included) are willing to help you set up

When you serve, you get trough MOST QUES faster, help the #Celine_Dion channel grow, and help propagate CELINE's high demand

If you have any question go to: http://celinedion.com.br/forum/viewforum.php?f=21

-----

!mmanuzzi Celine Dion & Allstars - God Bless America (Live Rock for USA 2002).n2v ::INFO:: 79.71Mb
!mmanuzzi Celine Dion & Anastacia - You Shook Me All Night Long (Live VH1 Divas 2002) - 03.mp3 ::INFO:: 5.46Mb 3m53s 192/44.
!mmanuzzi Celine Dion & Andrea Bocelli - The Prayer (Live Grammy Awards 1999).mpg ::INFO:: 42.26Mb
!mmanuzzi Celine Dion & Barbara Streisand - Tell Him (Live Chicago).mpg ::INFO:: 49.64Mb
!mmanuzzi Celine Dion & Barbara Streisand - Tell Him.n2v ::INFO:: 89.12Mb
!mmanuzzi Celine Dion & Carole King - The Reason (Live Divas'98 on MTV).mpg ::INFO:: 64.92Mb
!mmanuzzi Celine Dion & Dan Hill - Can't We Try (Live 1988).mpg ::INFO:: 54.98Mb
!mmanuzzi Celine Dion & Frank Sinatra - All The Way (Live TAST'99).n2v ::INFO:: 72.90Mb
!mmanuzzi Celine Dion & Garou - Sous Le Vent.n2v ::INFO:: 76.00Mb
!mmanuzzi Celine Dion & Josh Groban - The Prayer (Live MCD 2002).n2v ::INFO:: 91.11Mb
!mmanuzzi Celine Dion & Marc Dupre - Sous Le Vent (Live La Fureur de Celine Centre Holson 2002).n2v ::INFO:: 53.73Mb
!mmanuzzi Celine Dion & Peabo Bryson - Beauty and The Beast.n2v ::INFO:: 81.84Mb
!mmanuzzi Celine Dion - A New Day Has Come (Live Divas 2002 Las Vegas).mpg ::INFO:: 44.70Mb
!mmanuzzi Celine Dion - A New Day Has Come [Abilit Dance Remix].n2v ::INFO:: 121.11Mb
!mmanuzzi Celine Dion - All Because Of You - 02.mp3 ::INFO:: 4.95Mb 3m31s 192/44.10/S
!mmanuzzi Celine Dion - Amore Annasscunuto (Live AND Las Vegas 25Mar03).mp3 ::INFO:: 5.72Mb 4m53s 160/44.10/S
!mmanuzzi Celine Dion - AND Concert (Live Las Vegas 25Mar03).wmv ::INFO:: 119.81Mb
!mmanuzzi Celine Dion - Any Other Way .n2v ::INFO:: 81.07Mb
```

7.5- Once we identify the file to download, we can use copy/paste command.

We copy the line and paste it in the #Celine\_Dion Channel window. Leaving only to the end of type file (\*.mp3, \*.mpg) without file size (5.46 Mb or 5,598 kb) or \*.mp3 info. Like this file: '!mmanuzzi Celine Dion & Anastacia - You Shook Me All Night Long (Live VH1 Divas 2002) - 03.mp3 ::INFO:: 5.46Mb 3m53s 192/44.10/S', only type this part: '!mmanuzzi Celine Dion & Anastacia - You Shook Me All Night Long (Live VH1 Divas 2002) - 03.mp3' and then press 'Enter'.

You will receive a confirmation, the file is added to the waiting list like this:

```
<Bellamycn> !mmanuzzi Celine Dion & Anastacia - You Shook Me All Night Long (Live VH1 Divas 2002) - 03.mp3
-mmanuzzi- Request Accepted File: Celine Dion & Anastacia - You Shook Me All Night Long (Live VH1 Divas 2002)
- 03.mp3 Queue Position: 1 Allowed: 1 of 2 ?Min CPS: 500 ? Priority Queue: On OmeNServE v2.02
```

If there's free slot, the transfer will start like point 7.3 soon. What will happen next, is similar to what happened when you downloaded the list. After get the files you, find the downloaded file from the folder you choose to store files you get from IRC and play it.

7.6- Now introduce some useful OmeNServE server commands:

Type '@nickname-que' to get to know your queues stats of the OmeNServE server.

```
-Ania4- Queue Status You Have NO Files In My Queue 0 Slots Free 3 Files Queued. OmeNServE v1.40
```

```
<Ania4> Queue Status File: live in memphis part 1.mpg Position: 2 Waiting Time: 9secs Priority Queue: On OmeNServE v1.40
```

Type '@nickname-stats' to get to know the OmeNServE server status.

```
<Ania4> Free Slots: 0/2 Files In Queue: 2 Total Speed: 12,661 cps Next Slot: 552m Allowed: 1 Search: ON Mode: Servers Priority OmeNServE v1.40
```

Type '@nickname-fullstats' to get to know the OmeNServE server DCC Transfer Status.

```

<Ania4> List Of 355 Files @Ania4 Files Sent: 258 Record Send: 10,486 cps by gabriel_r Using ... OneNServe v1.40 ?
@OneN ... http://www.omenscripts.org
<Ania4> ... OneNServe v1.40 DCC Transfer Status ...
<Ania4> ... Send 1 ... live in memphis part 1.mpg at 5015 cps ( 70 % complete ) 10hrs 22mins 21secs left ...
<Ania4> ... Send 2 ... Live_A_Paris_part_1_of_2.mpg at 4414 cps ( 6 % complete ) 1day 6hrs 50mins 37secs left ...
<Ania4> ... Get 1 ... CMN Interj?SUCD.mpg at 788 cps ( 68 % complete ) 4hrs 49mins 22secs left ...
<Ania4> ... Total 3 File Transfers ...

```

Type '@nickname-remove filename' to remove the specific file you queued from the OmeNServe server.

```

<oneyear> @ania4-remove live in memphis part 1.mpg
-Ania4- Request Accepted Removed From Queue: live in memphis part 1.mpg OmeNServe v1.40

```

Type '@nickname-remove' to remove all file you queued from the OmeNServe server.

```

-Ania4- Request Accepted Removed From Queue: ALL OmeNServe v1.40

```

## 8. Search Commands In The Channel

8.1- #Celine\_Dion channel allow us to search files with find command: '@find'

For example by typing '@find god bless america' in #Celine\_Dion channel window, new window will open by any user who has files with the word 'god bless america'. All files with word 'god bless america' in filename can be download when you search file will appear in the window.

```

<Bellamy> [@Find Results] --SysReset 2.53--
<Bellamy> Found [1] file on Trigger:[/ctcp Bellamy !celine music] - Sends:[3/3] - Queues:[2/10]
<Bellamy> File: [Karaoke\Celine Dion - Karaoke - God Bless America.mp3] - Size [3.1MB]
<Bellamy> End of @Find.

```

```

<candicat9> Search Result 5 Matches For god bless america Copy And Paste !candicat9 FILENAME To The Channel To Request.
[ 2 / 2 ] Free Slots, 0 Queued OmeNServe v2.02
<candicat9> !candicat9 Celine Dion - God Bless America - Tribute to Heroes.rm.zip 6.14Mb OmeNServe v2.02
<candicat9> !candicat9 Celine Dion - God Bless America - National Salute (INCOMPLETE).npeg 1.96Mb OmeNServe v2.02
<candicat9> !candicat9 Celine Dion - God Bless America - Super Bowl.zip 6.49Mb OmeNServe v2.02
<candicat9> !candicat9 God Bless America (Live) (With Friends).zip 2.87Mb OmeNServe v2.02
<candicat9> !candicat9 God Bless America.zip 3.31Mb OmeNServe v2.02

```

If you can't find the file you want to search, try search a not too specific keyword, for example try '@find god bless'.

If you see the following message, it means you search files too fast. Try search again after 30 seconds.

```

-Bellamy- @Find Flood Protection: Please Wait Before Trying Again --SysReset 2.53--

```

After get the results, you can get the files. The way to download files has been mentioned at point 6 and 7

# II. How To Share Files Use

## OmeNServE

### 1. Get The Program

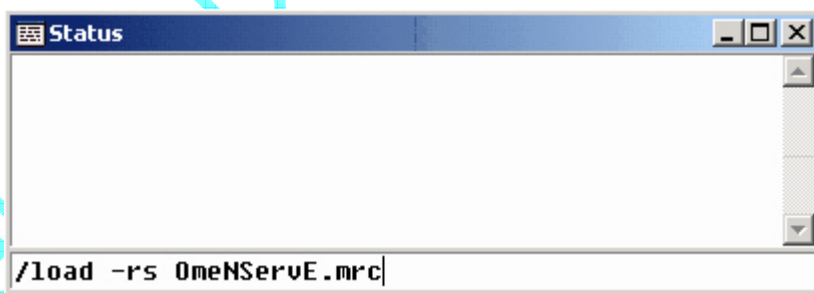
First you will need to download and install called **OmeNServE** to share your files on IRC. You can download the latest version here:

<http://www.omenscripts.org/omenserve/index.html>

### 2. Installation

2.1- Unzip ALL the files to your mIRC directory, overwriting any files that are already there. If you are an SDFind or SPR Jukebox user there is no need to uninstall either, OmeNServE will make all the necessary changes for you and retain your stats.

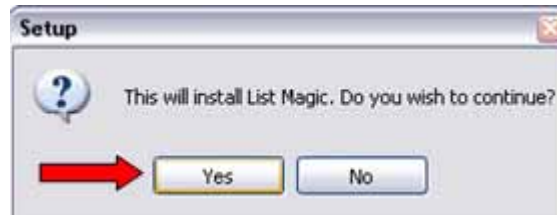
From your status window type `/load -rs omenserve.mrc` + 'Enter'.



2.2- You will then see the following script warning, you must CLICK on 'Yes', do not press enter or the script will not install properly.



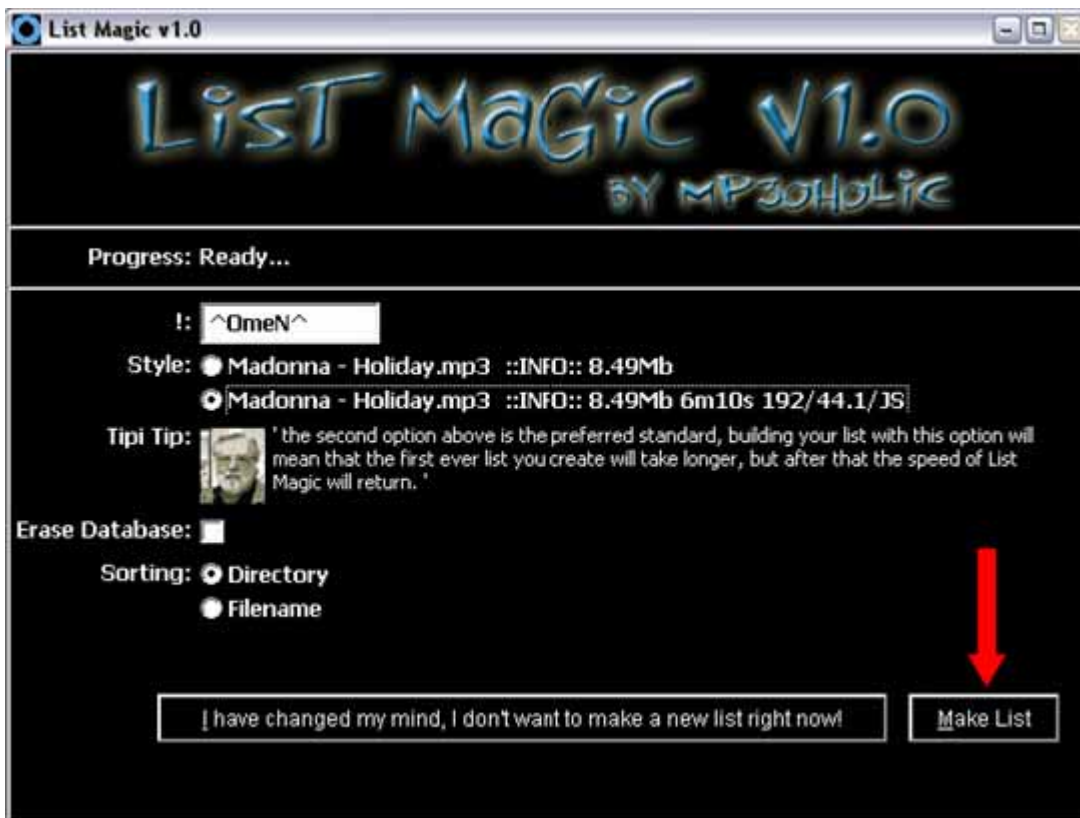
2.3- Next you will be prompted to install the List Magic list maker.



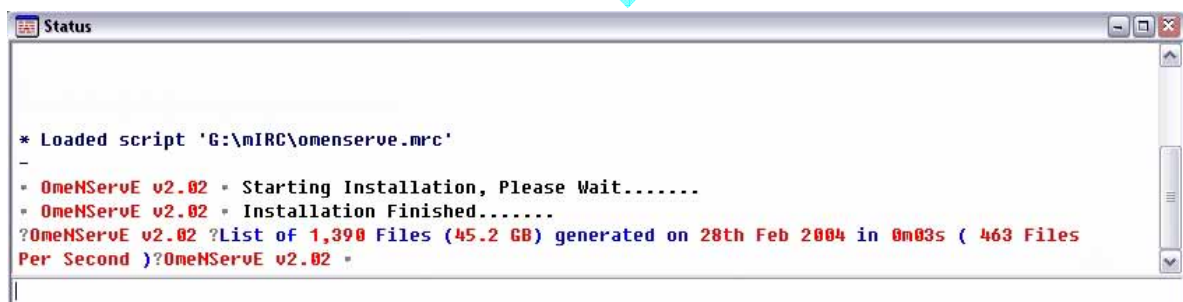
2.4- You will then be prompted to select the directories that you want to offer from. Note that all sub directories are included. Once you have added a directory, you will be prompted whether you want to add another. Press 'Yes' if you do, 'No' if you've added all of them. (Upgrading users will be taken straight to the make list option).



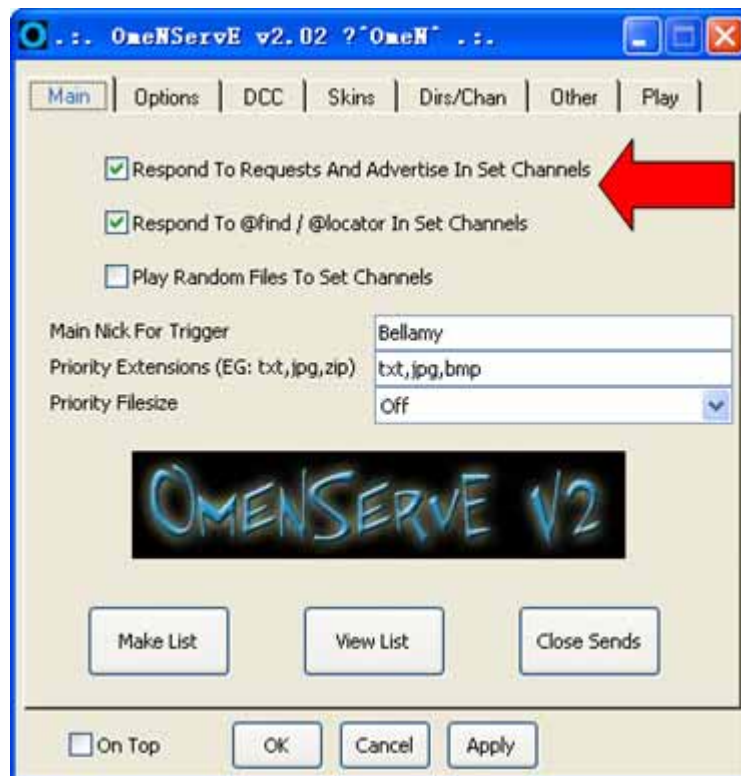
2.5- After pressing 'No', you will then see the List Maker screen. This determines what format your list will take. The full file info will take longer on the very first run but after that it is lightning fast. My list of 85,000+ files is done in less than 10 seconds on subsequent runs. If you'd like to add some introductory text at the start of your list then you can put it in the 'SDHeader.txt' file that's in your mIRC directory. When you are ready just press 'make list'.



2.6- Once the listmaker has finished you will receive a message in your status screen saying it has finished.

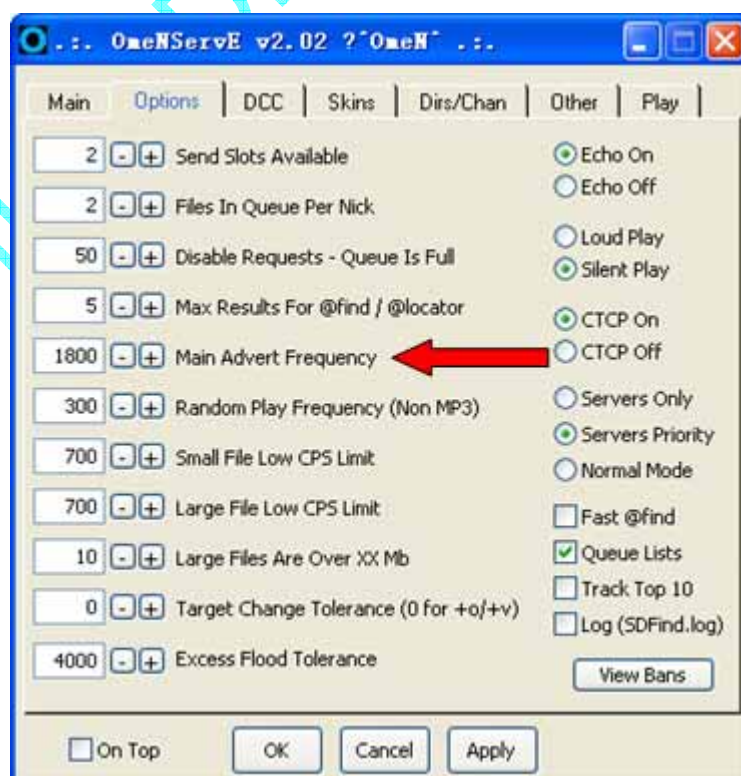


2.7- Now to start OmeNServe, goto the top of your mIRC screen and select 'Commands', then 'OmeNServe'. You will then be presented with the main setup screen. Tick the top two boxes ('Respond To Requests And Advertise In Set Channels', 'Respond To @find / @locator In Set Channels').



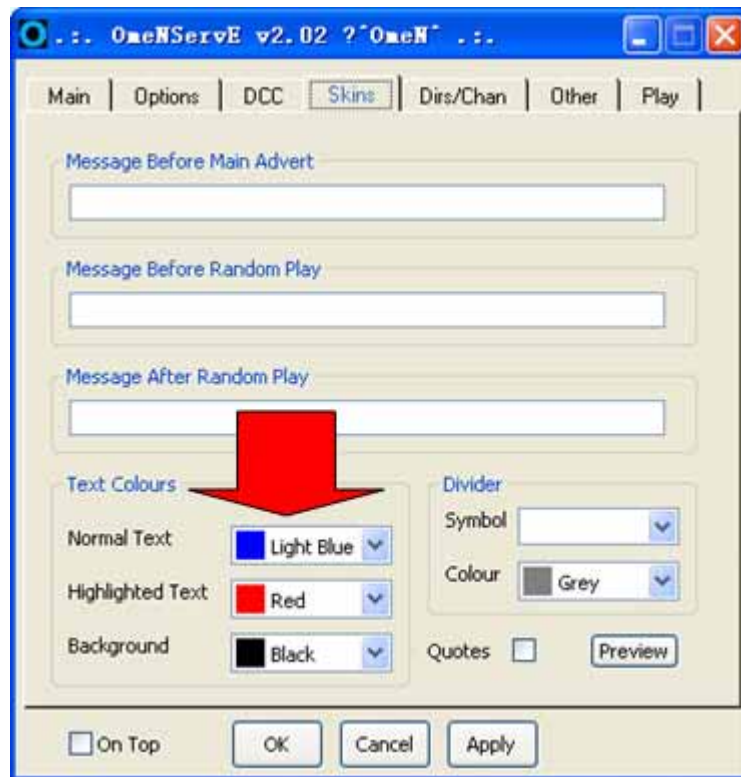
### 3. Set OmeNServe Settings

3.1- Now to set OmeNServe settings, goto the top of your mIRC screen and select 'Commands', then 'OmeNServe', then select 'Options' menu:

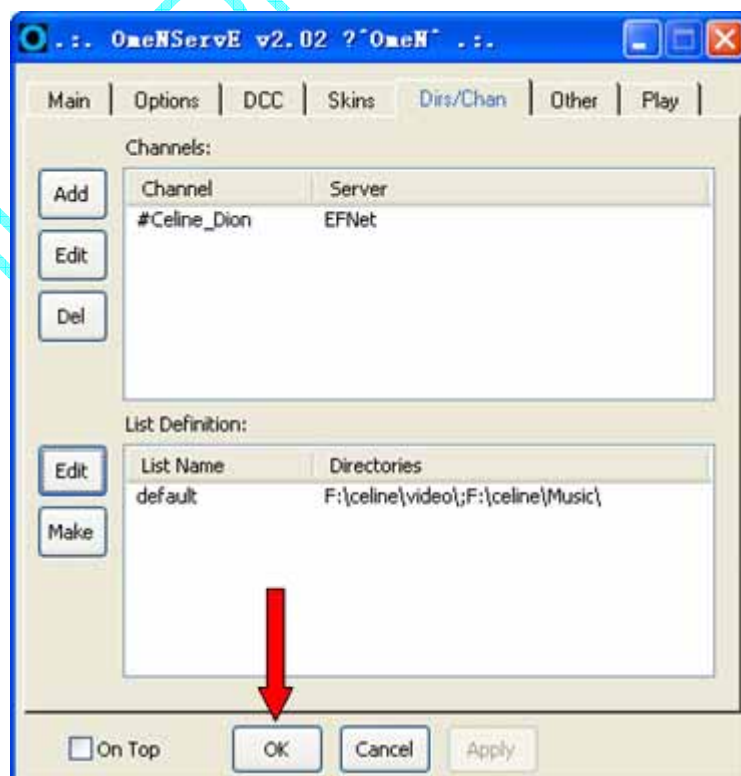


Change the 'Main Advert Frequency' to a number larger than 1800 (seconds).

3.2- Select 'Skins' menu of OmeNServE, change the 'text colours' to any colour you like, better make it different to other servers colours:



3.3- Select 'Dirs/Chan' menu of OmeNServE to set which folders you'd like to share and let it serve for which channel:



Press 'OK', now your OmeNServE is running very well.

## III. How To Share Files Use

### SysReset

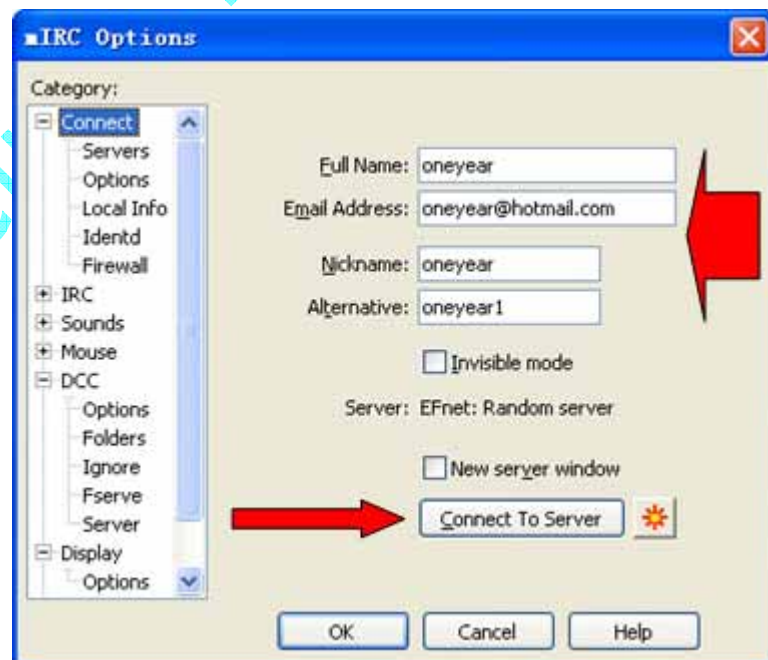
#### 1. Get The Program

1.1- Download our pre-configured version of **SysReset** (SysReset is a premiere fserve script for mIRC) from here: [SysReset \(1.5 MB\)](#)

#### 2. Installation

2.1- Make a new folder and extract the file there (for example: C:\ SysReset)

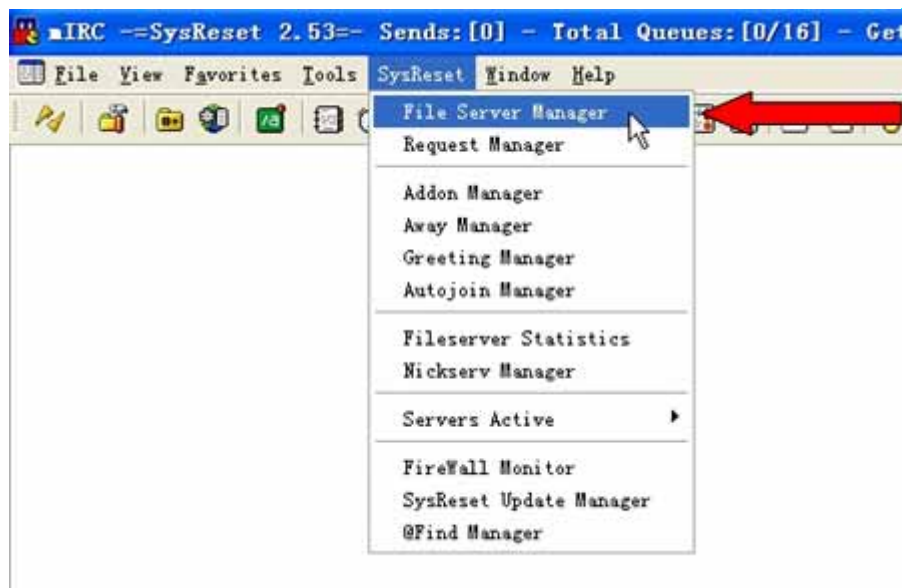
2.2- Run mirc.exe from that folder, the following screen will appear:



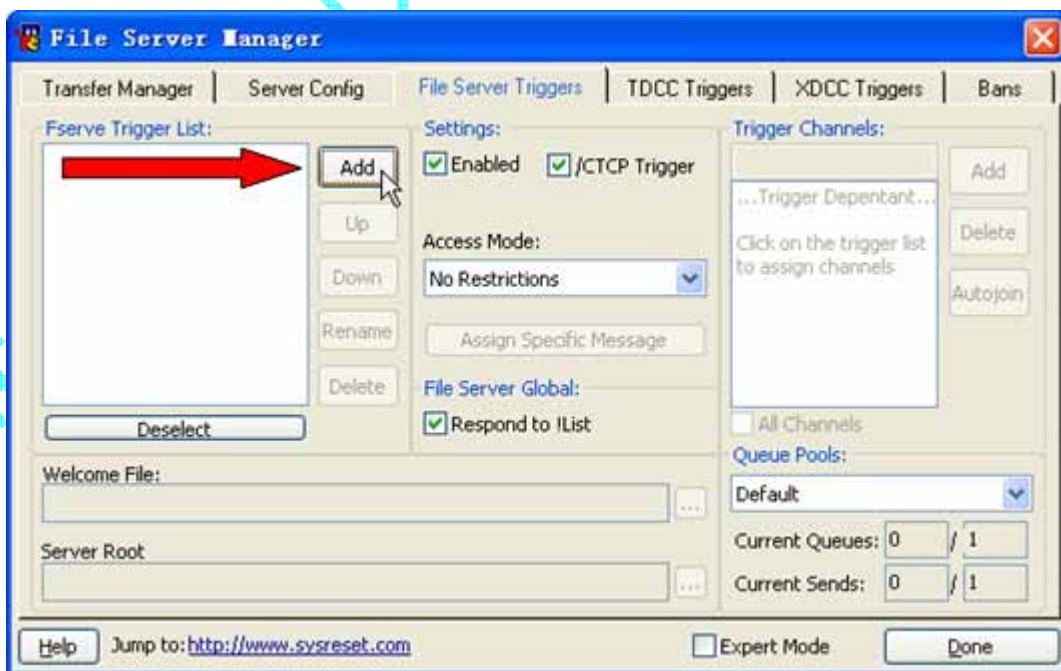
Fill in your details ('Full Name', 'Email Address'), and pick a 'Nickname'. Your nickname is the name people in IRC will see when you are connected. You are free to choose any nickname you like, up to 9 characters long. Do not use spaces and avoid unusual ASCII characters in your nickname. It is also very common to find people that use the same nickname and you may be asked or choose to switch nicknames to avoid confusion. The 'Alternative' nickname will be used if the first one is taken. You do not have to give your real name or email.

2.3- Then click the 'Connect To Server' button, it'll connect to EFnet server and join #Celine\_Dion channel automatically.

2.4- From menu select 'SysReset' -> 'File Server Manager' :



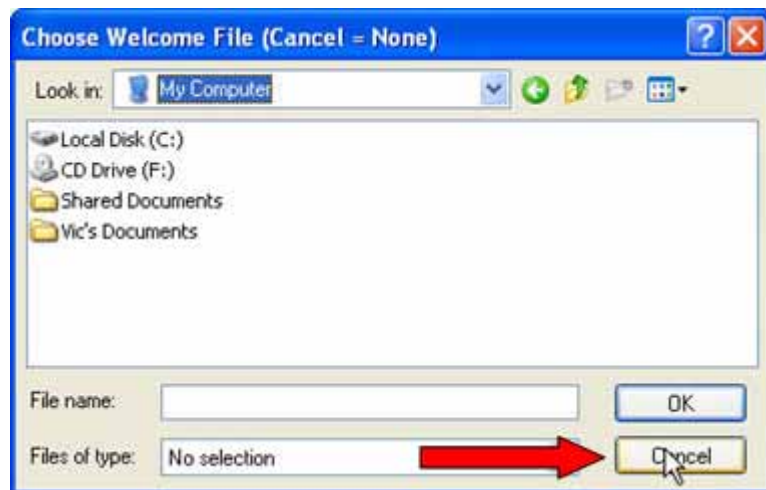
2.5- Go to 'File Server Triggers', and click on 'Add' from left:



2.6- Write in the window that appears the name of your trigger (example: mp3s, videos, images...) and click 'OK':



2.7- Next will ask you choose welcome file, click 'Cancel':



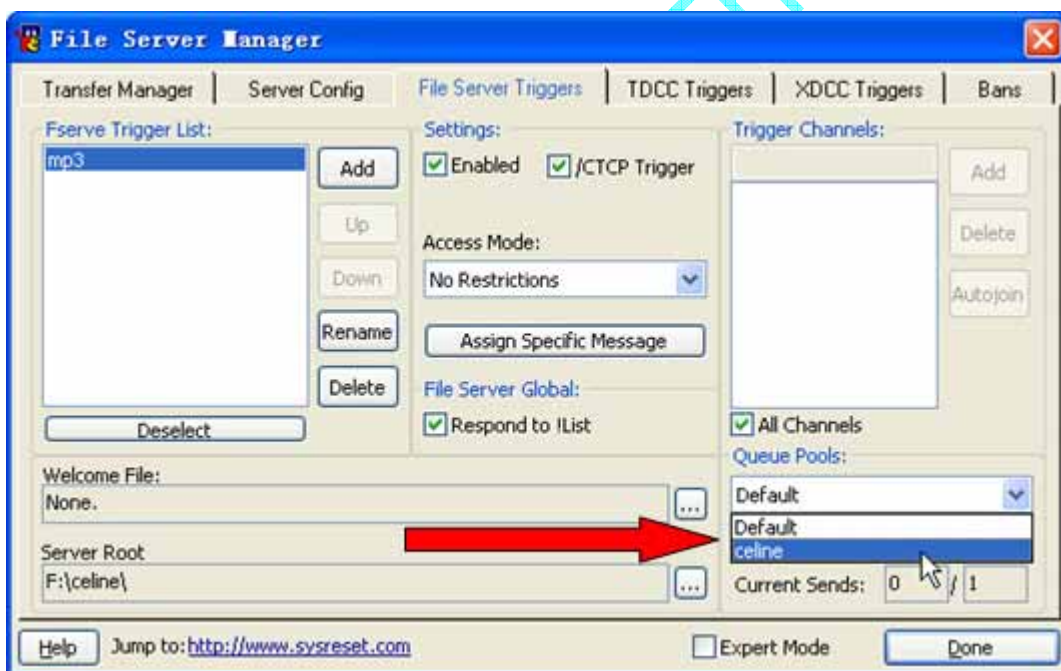
2.8- In the next window select the folder where are your files for share (example: mp3s, videos, images...) and click 'OK':



2.9- After select the trigger you made and make sure check 'Enabled', '/CTCP Trigger' and 'Respond to !List':



2.10- And on right-down select from 'Queue pools': 'celine'

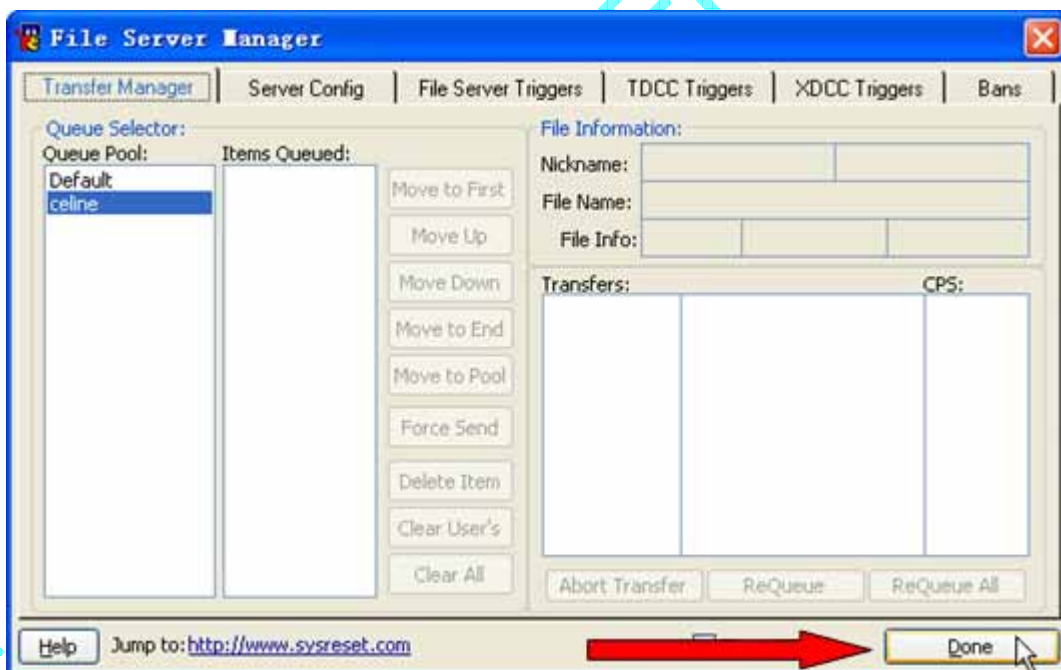


2.11- Select the trigger you made and on 'Transfer Manager' -> 'Queue Pool' select : 'celine'

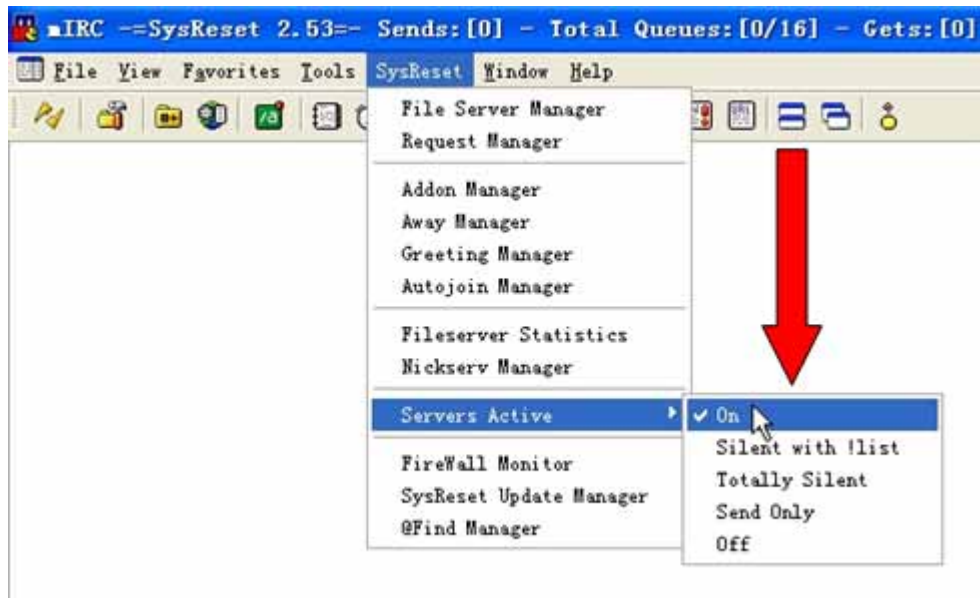


2.12- Repeat the steps 2.6 - 2.11 to make another trigger.

2.13- Click 'Done':

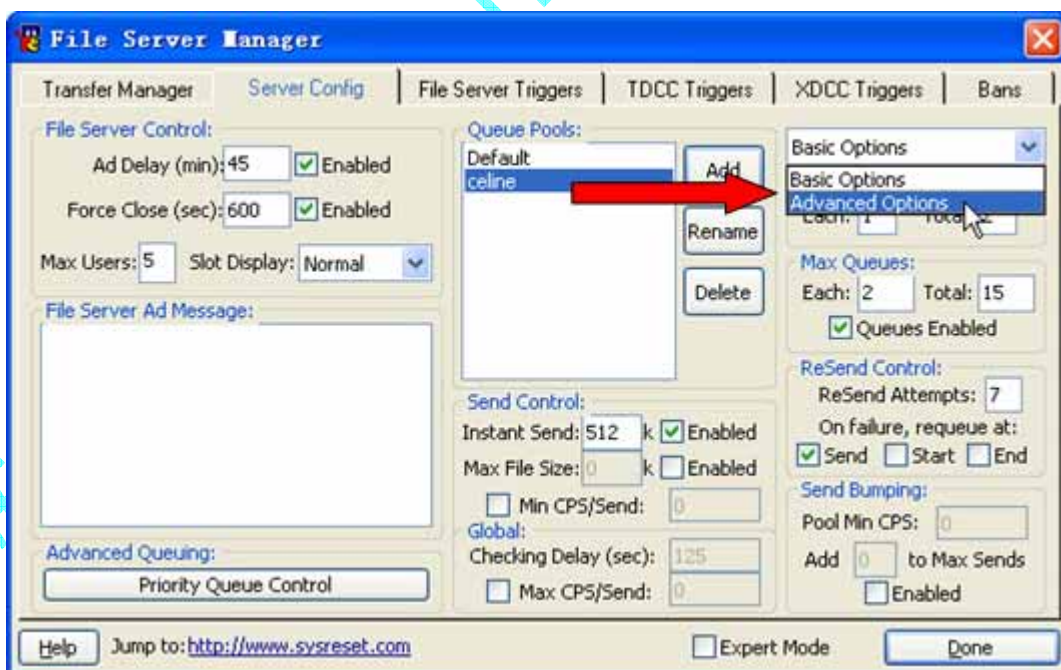


2.14- Finally click again on 'SysReset' from menu, go to 'Servers Active' and put it 'ON':

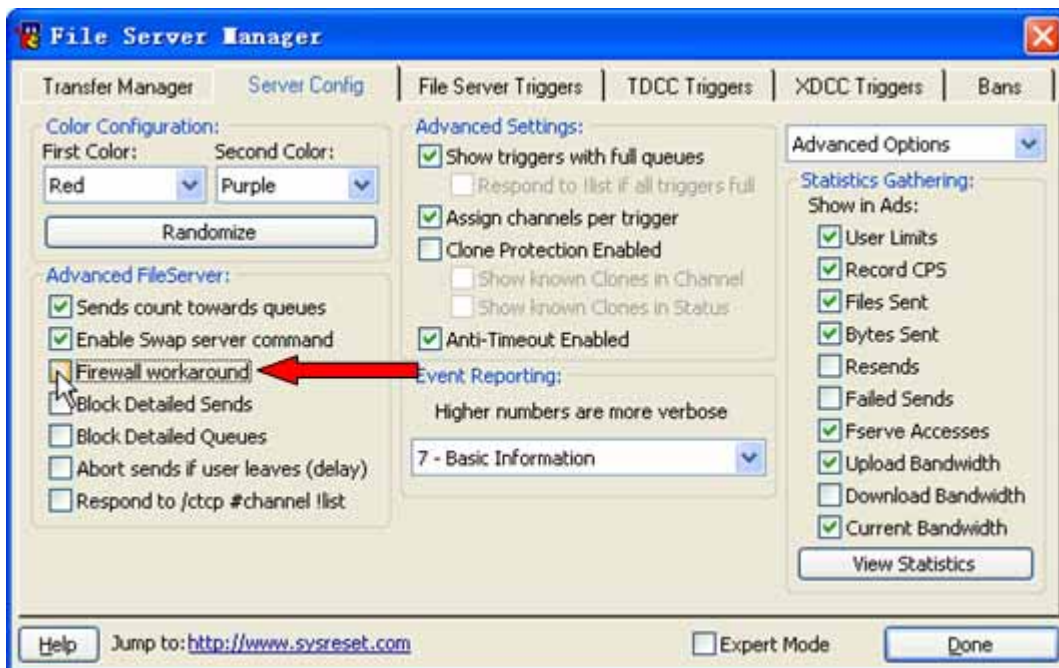


### 3. If Your Computer Is Behind Firewall

3.1- If your computer is behind firewall, you can use 'Firewall workaround' mode to get through firewall. Select it from menu: 'SysReset' -> 'File Server Manager' -> 'Server Config' and change from 'Basic Options' (from right-top) to 'Advanced Options':



3.2- Find where it says : 'Firewall workaround' (on the left) and click it



3.3- Input port '62', and click 'OK', and 'Done'.



Now all should work well!!!

## IV. F.A.Q. - Frequently Asked Questions

### 1. Introduce

1.1 What is IRC and mIRC? What's the difference?

Internet Relay Chat (IRC) is one of the most popular and most interactive services on the Internet. It was originally written by Jarkko Oikarinen in 1988. The history of IRC even older than WWW. Many larger and smaller IRC networks exist. The largest one, called EFnet (Eris Free net), usually serves over 15000 users at any given moment. IRC is where the Net comes alive! Using an IRC client (program) you can exchange text messages interactively with other people all over the world. IRC also can let you share and get files from each other.

[mIRC](#) is the most popular Windows client for IRC.

There're other pop clients, too. Like [Pirch](#), and [Virc](#) for Windows or [Ircle](#) for Mac's.

## 1.2 What is #Celine\_Dion - EFnet - IRC

#Celine\_Dion - EFnet - IRC is the largest Celine Dion fans channel on IRC network. We have fans all over the world in our channel. You can chat with fans all over the world LIVE here. Mostly we use English for chat to let everybody understand. But we welcome you use any language to chat here, especially when chat privately. And you can find a lot audio and video files of Celine, from old 80's performance to newest TV special in our channel. Since we have fans all over the world, so we have friends cap and rip files for us from all over the world (USA, Canada, France etc.). You can find we have more files than any website or any P2P network (for example: Kazaa, eDonkey, eMule, BitTorrent, DC++ etc.) on internet. And all the files are totally free.

## 1.3 What is [#Celine\\_Dion Web Chat](#)?

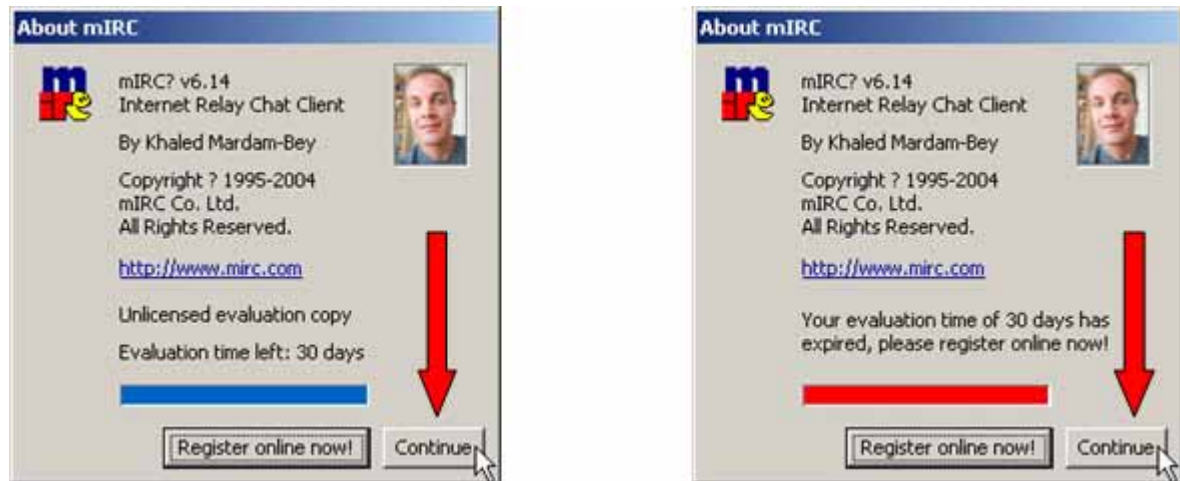
It is WEB version of our channel. You only need to fill the 'Nick name' and 'Real Name' fields, and choose a fast IRC server for you. It's very very easy to use! You can enjoy chat with fans all over the world by the web chat. But it's for chat only, can't get or share files by the web chat. If you want to get help on how to connect to IRC and download files, you can try it.

## 1.4 How to connect #Celine\_Dion - EFnet - IRC?

We suggest you use our pre-configured version of [SysReset](#) (SysReset is a premiere fserve script for mIRC) to connect our channel. Cause most settings have been configured already. If you use it, you'll take less steps to make mIRC work to get and share files in our channel. If you want to use our pre-configured version of SysReset, you can read Part III of this tutorial only. If you like to use mIRC share file by OmeNServE, you need to read Part I and Part II of this tutorial to make you mIRC work for our channel.

## 2. Usage Troubleshooting

### 2.1 What is the register warning screen?



If you haven't register mIRC, when you open it, the above screens may appear. It'll ask you to register it. You can choose 'Continue' to ignore it, even after your evaluation time of 30 days has expired. The functions are same if you don't register mIRC. The only difference is the register warning screen will disappear if you register it.

2.2 I tried to connect to a server and received a 'Unable to resolve server', 'Connection timed out' or 'You are not authorized to use this server' message. Why?

**\* Unable to resolve server**

**\* Unable to connect to server (Connection timed out)**

**You are not authorized to use this server**

First of all, always try some other IRC servers when you are unable to access your favorite one. The server, its machine or the route to the server may just be down or broken. Try choose 'EFnet' for 'IRC Network', and choose 'IRC Server' to 'EFnet: Random server'. Also you can choose 'IRC Server' to any EFnet server according to your location (AU = Australia; CA = Canada; EU = Europe; US = United States; etc.) , just take one close to where you live. For more info, please read Part 1 - point 2 & 3 .

2.3 When I connect I get a 'Not enough user parameters' error, when I try to join #Celine\_Dion?

**\* Not enough user parameters**

A 'Not enough user parameters' error will occur if you try to connect to a server but you did not have the Local Host name filled in, or had it filled in incorrectly. Check your entry in your client's setup menu. Also check if you supplied your client with a valid E-Mail address. For more info, please read Part I - point 2.2 & 2.5 .

2.4 Why I received a '#Celine\_Dion unable to join channel (need correct key)' message, when I try to join #Celine\_Dion?

**#Celine\_Dion unable to join channel (need correct key)**

Cause our channel is password protected to avoid spammers. The password is: 'celinerocks' (all letters of the password are lowercases). For more info, please read Part I - point 3

2.5 How to chat with others in #Celine\_Dion - EFnet - IRC?

You can chat with everyone in channel window (#Celine\_Dion), everybody in the channel can watch what you typed in channel window. If you want to chat with someone privately, just use mouse left key double click his nickname. Then a private chat window will appear, you can chat with him/her privately in that window.

2.6 How to search files from #Celine\_Dion - EFnet - IRC?

You can use @find command search files in our channel. For more info of how to search files from #Celine\_Dion - EFnet - IRC, please read Part I - point 8

2.7 How to get files from #Celine\_Dion - EFnet - IRC?

For more info of how to get files from #Celine\_Dion - EFnet - IRC, please read Part I - point 6 & 7 .

## 2.8 How to copy text in mIRC?

To copy text in mIRC, you need to hold on the mouse left button select the text from left to right. Then the text you select is already in clipboard. Now you can paste it to anywhere you like. Example:

```
!AlberDR2 Celine Interview On ABC Primetime 2003 Sep. 15.mpg
```

Hold on the mouse left button select the text '!AlberDR2 Celine Interview On ABC Primetime 2003 Sep. 15.mpg' from left to right. When you selected on the text, it'll become black background, white text. Then the text '!AlberDR2 Celine Interview On ABC Primetime 2003 Sep. 15.mpg' has been copied already.

## 2.9 When I try to access a FServer, I received a 'voice restricted trigger' message. Or when I try to get a list of OmeNServE, I received a 'Request Denied Servers Only mode is active, you need to be sharing to use my server. ' message. Why?

```
-Bellamy- Sorry !celine video is a voice restricted trigger. ==SysReset 2.53==
```

```
-AlberDR2- Request Denied > Servers Only mode is active, you need to be sharing to use my server. > Visit http://www.omenscripts.org To Get This Serving Script > OmeNServE v2.02 >
```

Cause the FServer you're trying to access is voice restricted. 'Voice restricted' is same as 'Servers Only mode'. You need to be voiced to get files from these servers. You need to be sharing to get voice. When you share your Celine's files in our channel, you'll get voice. After get voice, you can get files from any server in our channel. If you keep share your files in our channel for few days, we'll add you into our auto voice list. Then you'll get voice every time you connect to our channel. We suggest you use our pre-configured version of [SysReset](#) or [OmeNServE](#) to share files. For more info of how to share files in #Celine\_Dion - EFnet - IRC, please read Part III or Part II.

## 2.10 When I try to access a FServer or receive a file, I received a 'this server is using an alternate method, please make sure your DCC server is active and set to port 62. /dccserver +sc on 62' message. Why?

```
-Koolan- Server Notice: This server is using an alternate send method, please make sure your DCC Server is active and set to port 62. /dccserver +sc on 62.
```

This is because the server you're trying to access is behind firewall and using 'Firewall workaround' mode. All you need to do is type '/dccserver +sc on 62' anywhere in mIRC, then you can get into the FServer or receive files from it.

2.11 When I try to access a FServer, I received a 'Server Notice: FileServer is busy, please try again later.' message. Why?

**Server Notice: FileServer is busy, please try again later.**

This means you tried too many times to access same FServer in few seconds, You need to try again later.

2.12 When I try to request a file from servers, I received a 'Adding your file to queue slot' message by SysReset or 'Request accept' message by OmeNServE, but the files won't send. Why?

**Adding your file to queue slot 1. The file will send when the next send slot is open.**

```
-mmanuzzi- Request Accepted File: Celine Dion & Anastacia - You Shook Me All Night Long (Live VH1 Divas 2002)
- 03.mp3 Queue Position: 1 Allowed: 1 of 2 ?Min CPS: 500 ? Priority Queue: On OmeNServE v2.02
```

This means all send slots are full right now, your request to get the file already at queue slot 1. The file will send to you when there's free send slot. So you need to wait till your turn. For more info, please read Part I - point 6.12 .

2.13 When I try to request a file from servers, I received a 'Invalid file name, please use the form: < get filename.ext > , This server does NOT handle wildcards ( \*.\* )' message by SysReset or ' I Don't Have \*.\* Check Your Spelling Or Get My Newest List' message by OmeNServE. Why?

**Invalid file name, please use the form: < get filename.ext >  
This server does NOT handle wildcards ( \*.\* )**

This message means the file name you typed is wrong. You need to check again to make sure you don't type wrong. You can use copy/paste function to make sure you typed correct. And maybe you use the 'get' command with a folder

name. The words in capital letters without file extension are folders/directories. Only words listed in lowercases with file extension are file names.

Request Denied I Don't Have Millennium Eve Concert Part 1.mpg Check Your Spelling Or Get My Newest List  
OmeNServE v1.40

This message means the file name you typed is wrong. You need to check your spelling or get the newest list.

## 2.14 Why I can't receive files or always receive file warning?



Please make sure your DCC settings are set right. For more info, please read Part I - point 5 .

## 2.15 How to connect to #Celine\_Dion channel every time I run mIRC?

You need to add #Celine\_Dion channel to favorites. For more info of how to add #Celine\_Dion channel to favorites, please read Part I - point 3

2.16 What's the '@' or '+' before nickname on the name list means?

```
@AlberDR2
@Bellamy
@CelineBot
@CelineFan
@CelinePop
@DionFrog5
@DionLover
@Koolan
@OneCeline
@OneHeart
@OneVoice
@sokoban
@TDiDdy
+Alleygirl
+candicat9
+CNature
+Fanny_
+NotMyTime
+Sk8er_boy
celine196
oneyear
X-Crash
YakijOff
```

'@' means OP (channel operator), '+' means voiced. When you share your Celine's files in our channel, you'll get voice. After get voice, you can get files from any server in our channel. If you keep share your files in our channel for few days, we'll add you into our auto voice list. Then you'll get voice every time you connect to our channel.

2.17 Help! Someone kicked/banned me from #Celine\_Dion channel.

**\* You were kicked from #Celine\_Dion by CelineFan (Repeat)**

**\* You were kicked from #Celine\_Dion by CelineFan (banned:Repeat)**

Mostly you're kicked by the bots (Robots). We have bots to watch over Our channel. Whenever you type more than 3 lines within few seconds, the bots will kick you out. It's just to avoid flood the channel. You only need to wait few minutes to login again. Kick doesn't equals ban. But when you repeat too much, the bots will even ban you for a while. You have to wait more time to login, if you're banned.

2.18 What's .m2v file? How to play it?

We have many .m2v files in our channel. .m2v file is SVCD format file. You can use DVD software player (PowerDVD, WinDVD etc.) to play it. If You have MPEG

2 codec installed in Windows, you can even play it directly by Windows Media Player. You can also burn .m2v files in to SVCD disc, and play on DVD player support SVCD disc.

## 2.19 Why I get can't play some .avi files I get from

#Celine\_Dion channel?

Many .avi files in our channel are DivX files. You need to get and install the [DivX Codec](#) to play those files.

## 2.20 What are CD image files? How to use them?

We have some CD image files shared in our channel. .iso, .nrg, .cue and .bin etc. are CD image files. You can use CD burning software make a VCD or SVCD from the CD image files. We suggest you use Nero Burning Rom 6 to burn CD image files. To burn CD image, select 'Burner' in Nero Burning Rom menu, then select burn from image files, choose the file you want to burn.

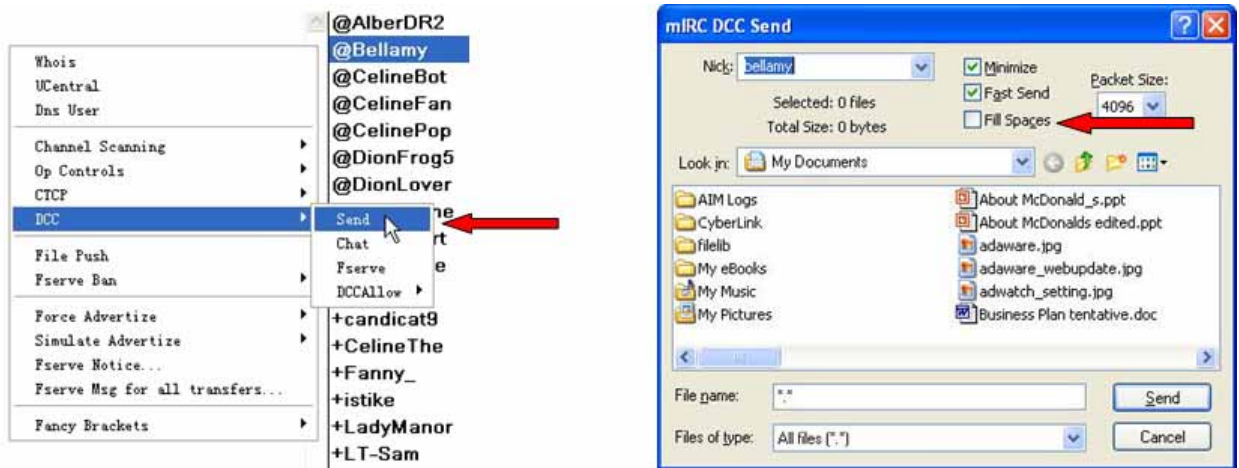
# 3. File Sharing Troubleshooting

## 3.1 How to share files in #Celine\_Dion - EFnet - IRC?

We suggest you use our pre-configured version of [SysReset](#) or [OmeNServe](#) to share files. When you share your Celine's files in our channel, you'll get voice. After get voice, you can get files from any server in our channel. If you keep share your files in our channel for few days, we'll add you into our auto voice list. Then you'll get voice every time you connect to our channel. For more info of how to share files in #Celine\_Dion - EFnet - IRC, please read Part III or Part II.

## 3.2 How to send files to someone manually?

Use mouse right key click his/her nickname, then select 'DCC' -> 'Send' , then choose the file you want to send. Remember uncheck the 'Fill Spaces' option.

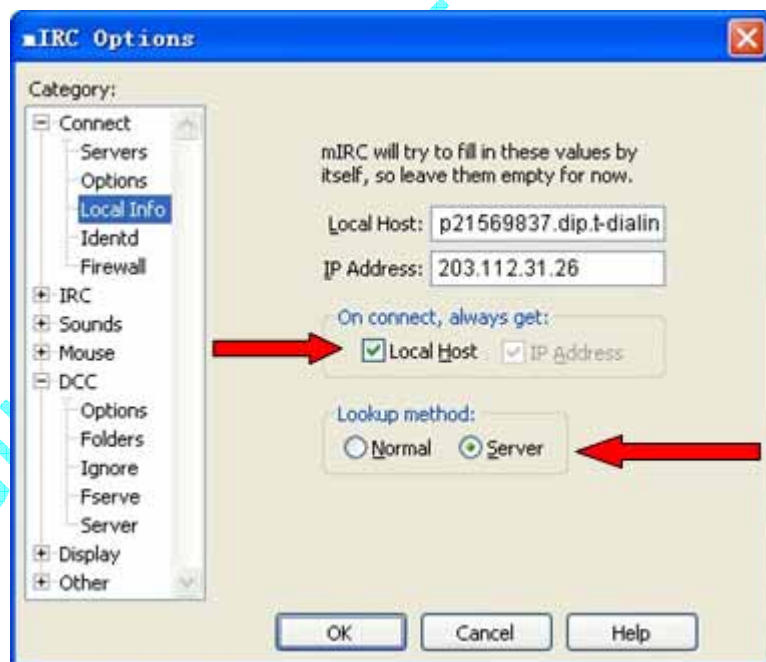


### 3.3 Why I can't send files to others?

**DCC Send to 203.112.31.25 incomplete (connection failed)**

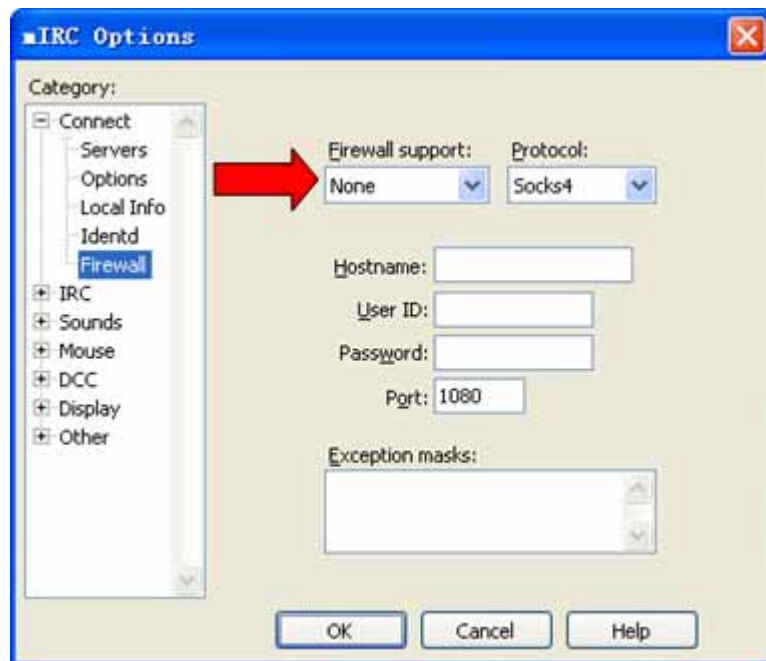
**DCC Send to 203.112.31.25 incomplete (unable to connect)**

First check these options. Select from menu 'Tools' -> 'Options' -> 'Connect' -> 'Local Info', and the following screen will appear:



You need to check 'Local Host' and and select 'Server' as Lookup method, and the top 2 boxes should be filled in automatically when you connect to mIRC. Then click 'OK' to finish.

Now select 'Firewall' on the left panel, and the following screen will appear:



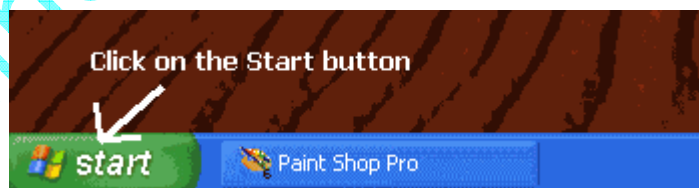
Be sure 'Firewall support' select to 'None'

If still don't work maybe you have firewall or router installed. Then you need to disable your firwall or enable ports in your firwall, or forward ports in your router. We'll show how to disable the Windows XP's firewall in point 3.4 . And we'll use Linksys Etherfast Router as example to explain how to forward ports in your router in point 3.5 . SysReset users can read Part III - point 3 too.

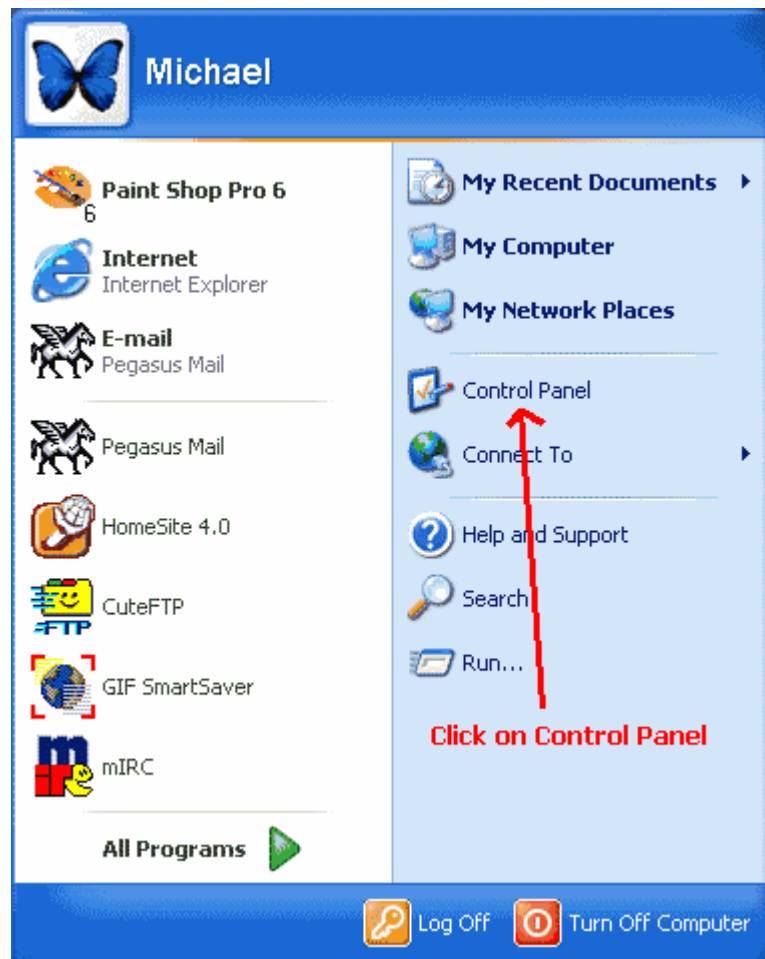
### 3.4 Disable the Windows XP's firewall

Anyone running Windows XP, may have the firewall enable, to let mIRC works, you must disable Windows XP's firewall or open ports in it.

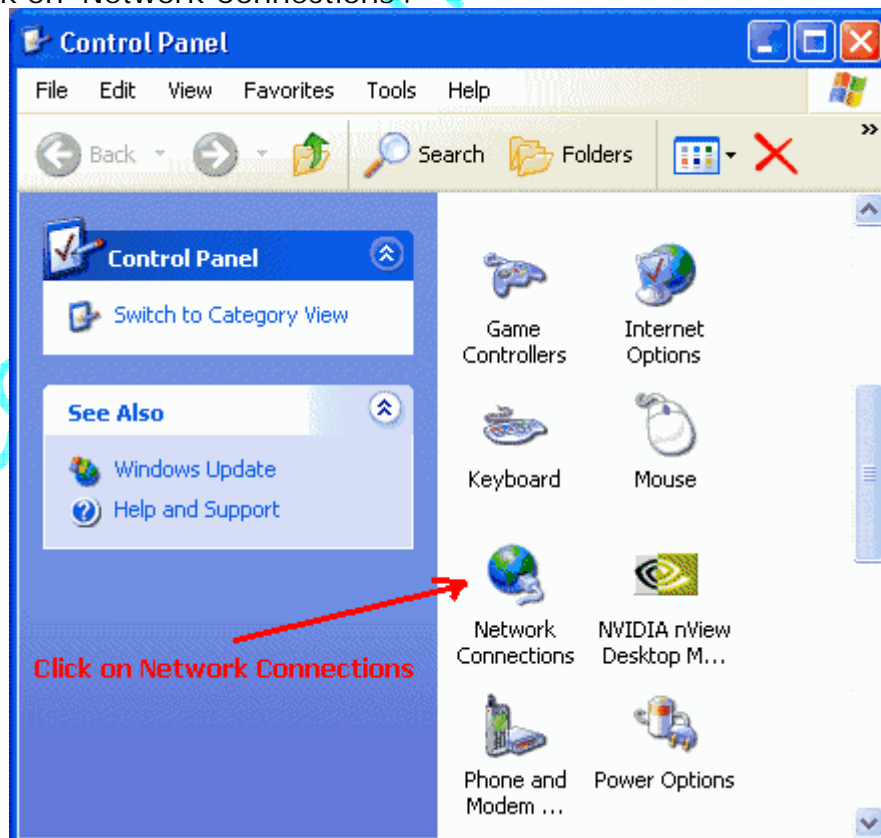
3.4.1- Click on the Windows 'Start' button.



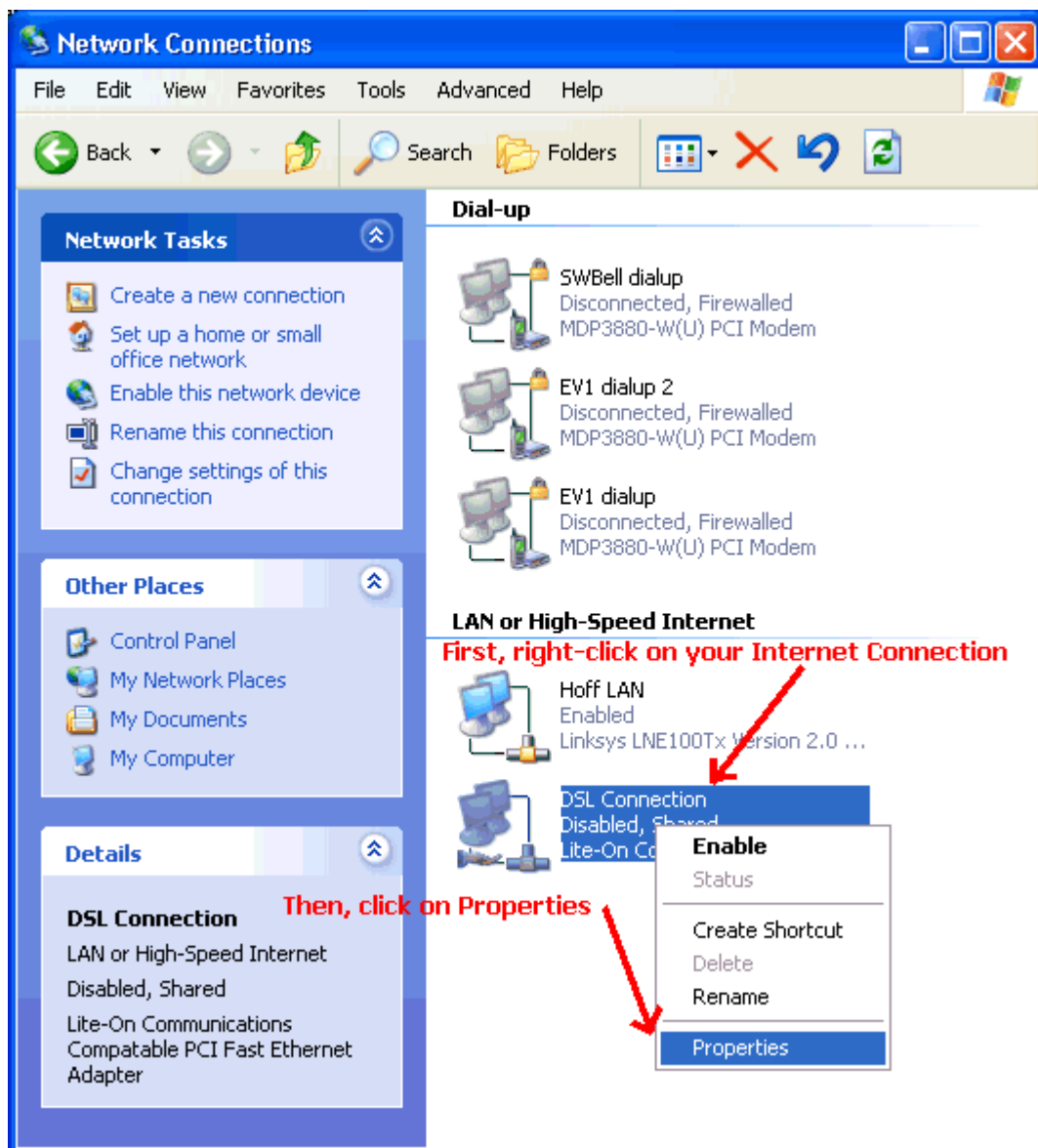
3.4.2- Click on 'Control Panel'.



3.4.3- Click on 'Network Connections'.

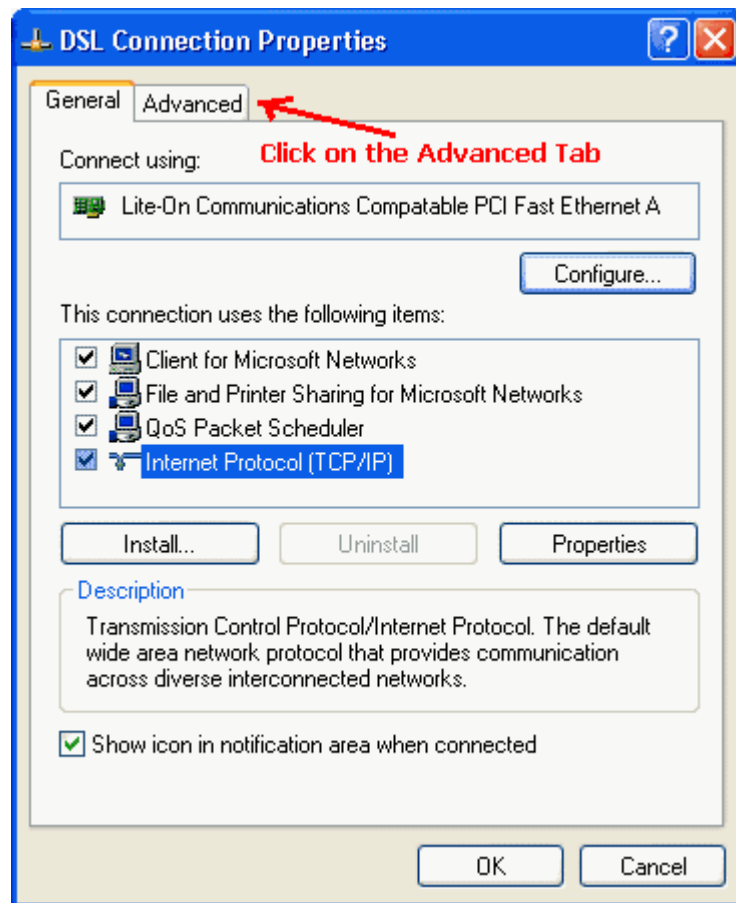


3.4.4- Right click on your Internet connection. It could be a dialup connection, DSL connection, or cable connection etc. Select 'Properties' from the menu.

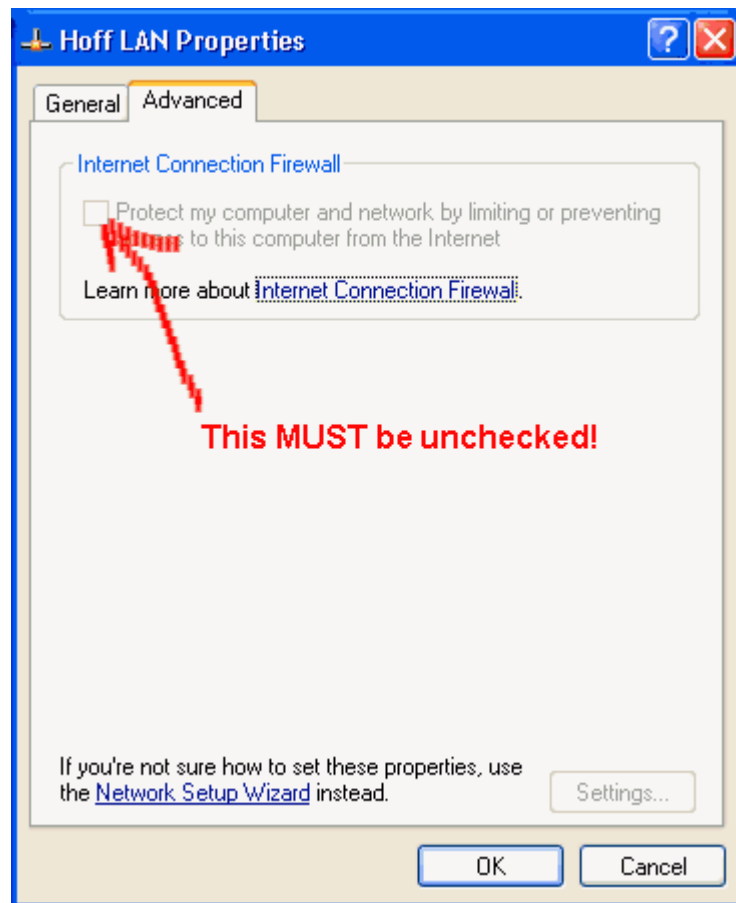


3.4.5- Click on the 'Advanced' Tab.

#Cein



3.4.6- This is the advanced tab for the Connection. Now **uncheck** the 'Protect my computer and network by limiting or preventing access to this computer from the internet' option. The Windows XP's firewall will be disabled. Now mIRC will work.

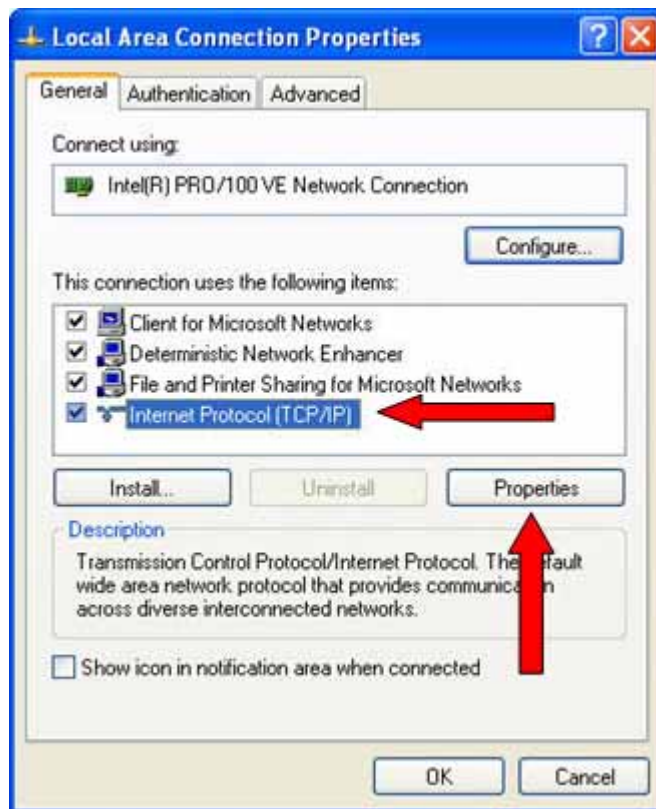


If you don't want to disable Windows XP's firewall, then you must open ports in it. You can find more info [here](#)

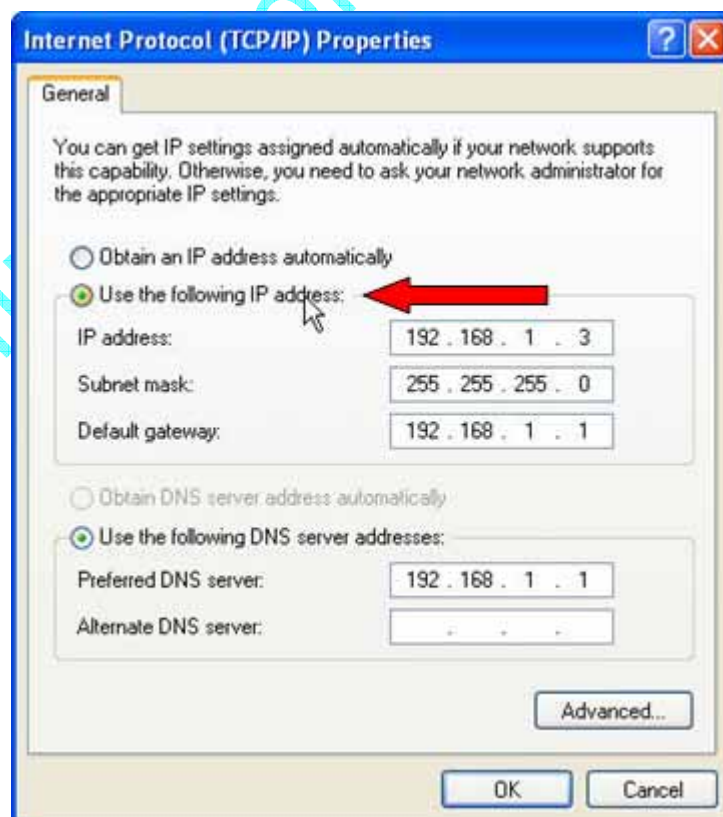
### 3.5 Forward ports in Linksys Etherfast Router

3.5.1- First we recommend that you manually configure each computer so that it has a fixed local IP address. This means turning off DHCP (Dynamic Host Configuration Protocol).

Click on the Windows 'Start' Button. Click on 'Control Panel' then 'Network Connections', Right-Click on the LAN icon under 'LAN or High Speed Internet' (the one that says 'Enabled'), then click on 'Properties', like showed in 3.4.1 - 3.4.4. Then the connection properties window will appear, select 'Internet Protocol (TCP/IP)', and click on 'Properties'.



The Internet Protocol (TCP/IP) Properties window will appear, select 'Use the following IP address'. Input a 'IP address' hasn't been use yet from 192.168.1.2 to 192.168.1.255. Set 'Subnet mask' as 255.255.255.0 . 'Default gateway' and 'Preferred DNS server' are your router's IP, it's 192.168.1.1 for Linksys routers (maybe 192.168.0.1 or other IP address for other routers).



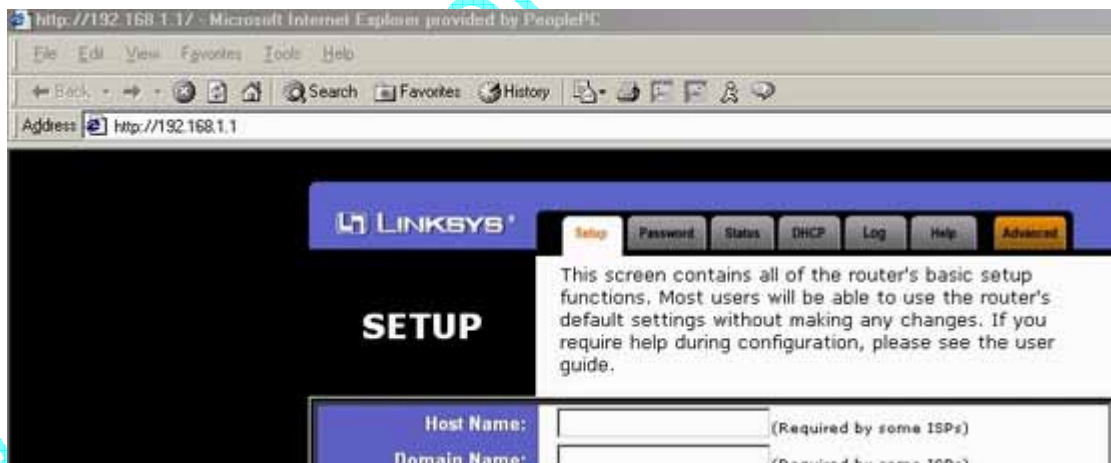
Then click 'OK'. Now your computer has a fixed local IP address.

3.5.2- If you are running Windows XP, you need to turn off the built-in Windows XP firewall. You probably already did this when you setup your router, but if not, it must be done now. For more info of how to disable Windows XP firewall, please read point 3.4 .

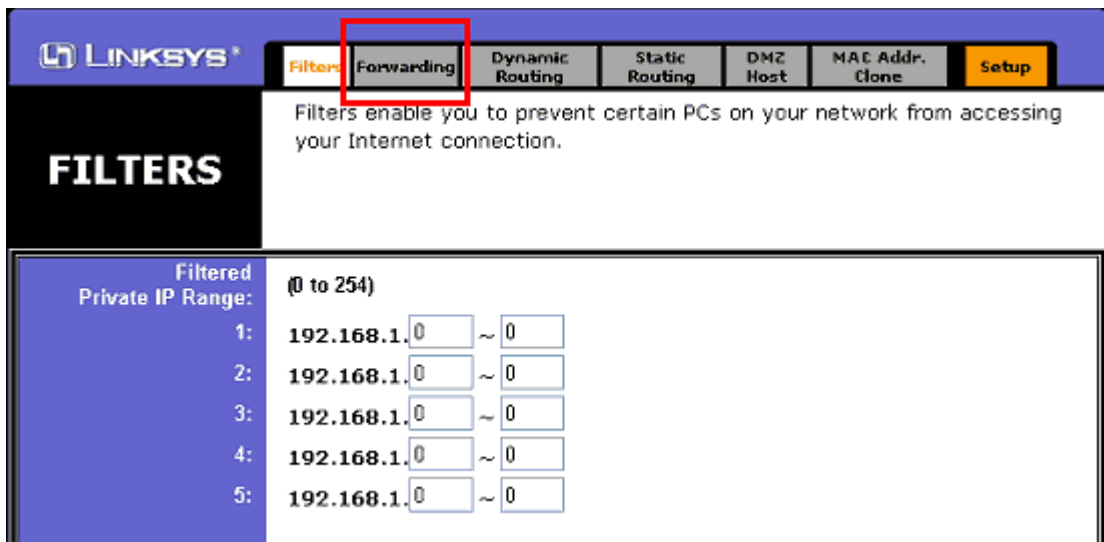
3.5.3- Open your IE browser and type in <http://192.168.1.1/> . Log in to the Linksys router configuration system with your password. The default is type nothing in the top box, in the 2nd box type: 'admin', Click 'OK'.



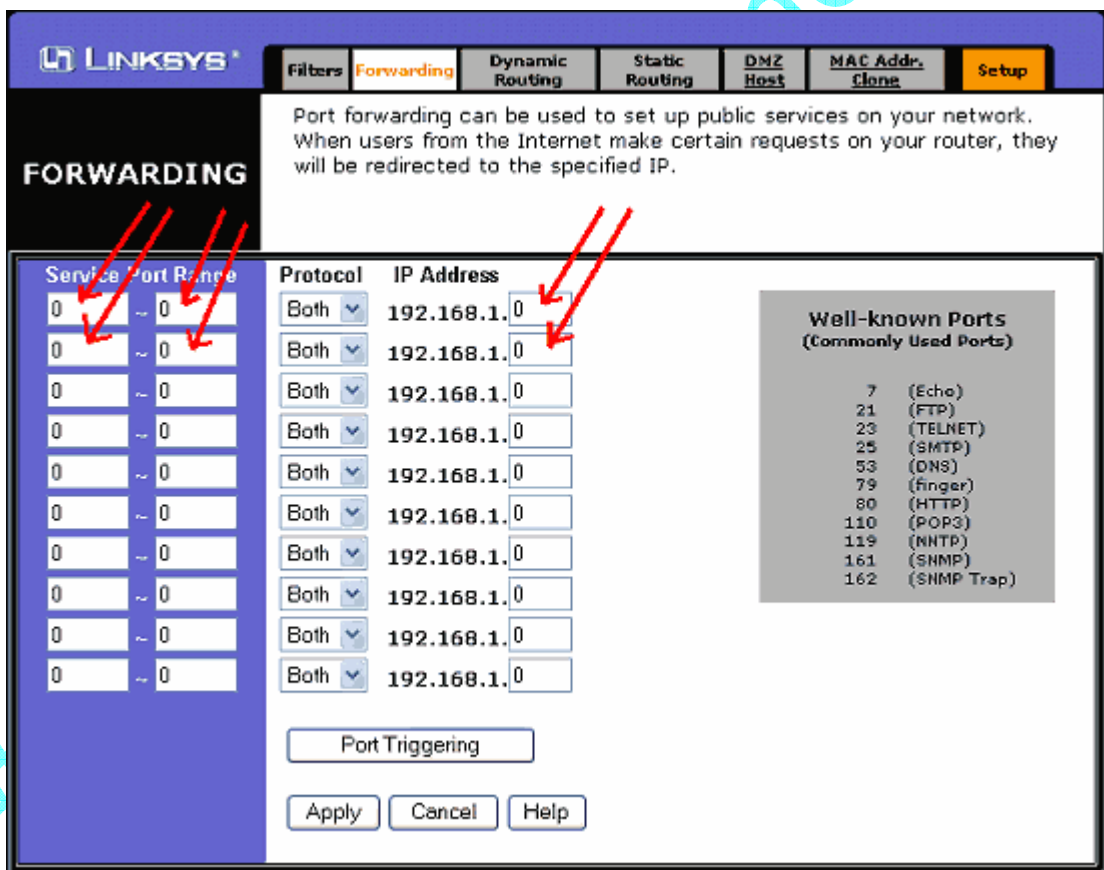
3.5.4- You will see the initial setup page as seen below. Your entries on this page may be different. Note this is only the top half of the setup page. Click on the 'Advanced' tab (orange tab shown above).



3.5.5- This is the 'Filters' Page of the Advanced Setup section. Note that only the top half of the page is shown here. Click on the 'Forwarding' (shown in the red box).



3.5.6- This is the Forwarding page of the Advanced Setup section. Here we will setup ports for DCC. Again, we strongly recommend you set the local IP addresses of your computers manually. Otherwise port forwarding will most likely not work. Read step 3.5.1 to set fixed local IP address for your computer.



3.5.7- First (1) enter the ports that will be forwarded for your computer. In this example: 62-62 and 5060-5069. Next (2) you need to enter the LAN computer IP address. In this example: 192.168.1.3 . And remember the port ranges for the specific computer as you will need them later when you configure your mIRC. When finished, click on the 'Apply' button (3). You will get a screen telling you the operation was successful. Click on 'Continue'.

**LINKSYS**

Filters **Forwarding** Dynamic Routing Static Routing DMZ Host MAC Addr. Clone Setup

## FORWARDING

Port forwarding can be used to set up public services on your network. When users from the Internet make certain requests on your router, they will be redirected to the specified IP.

Service Port Range	Protocol	IP Address
62 ~ 62	Both	192.168.1.2
5060 ~ 5069	Both	192.168.1.3
0 ~ 0	Both	192.168.1.0
0 ~ 0	Both	192.168.1.0
0 ~ 0	Both	192.168.1.0
0 ~ 0	Both	192.168.1.0
0 ~ 0	Both	192.168.1.0
0 ~ 0	Both	192.168.1.0
0 ~ 0	Both	192.168.1.0
0 ~ 0	Both	192.168.1.0
0 ~ 0	Both	192.168.1.0
0 ~ 0	Both	192.168.1.0
0 ~ 0	Both	192.168.1.0

Well-known Ports (Commonly Used Ports)

- 7 (Echo)
- 21 (FTP)
- 23 (TELNET)
- 25 (SMTP)
- 53 (DNS)
- 79 (finger)
- 80 (HTTP)
- 110 (POP3)
- 119 (NNTP)
- 161 (SNMP)
- 162 (SNMP Trap)

Port Triggering

Apply Cancel Help

3.5.8- After clicking on 'Continue' you will be back at the 'Forwarding' page with all the DCC info filled in. Now we need to go to the Port Triggering page to setup Identd. Click on the Port Triggering button circled in red.

**LINKSYS**

Filters **Forwarding** Dynamic Routing Static Routing DMZ Host MAC Addr. Clone Setup

## FORWARDING

Port forwarding can be used to set up public services on your network. When users from the Internet make certain requests on your router, they will be redirected to the specified IP.

Service Port Range	Protocol	IP Address
62 ~ 62	Both	192.168.1.3
5060 ~ 5069	Both	192.168.1.3
0 ~ 0	Both	192.168.1.0
0 ~ 0	Both	192.168.1.0
0 ~ 0	Both	192.168.1.0
0 ~ 0	Both	192.168.1.0
0 ~ 0	Both	192.168.1.0
0 ~ 0	Both	192.168.1.0
0 ~ 0	Both	192.168.1.0
0 ~ 0	Both	192.168.1.0
0 ~ 0	Both	192.168.1.0
0 ~ 0	Both	192.168.1.0

Well-known Ports (Commonly Used Ports)

- 7 (Echo)
- 21 (FTP)
- 23 (TELNET)
- 25 (SMTP)
- 53 (DNS)
- 79 (finger)
- 80 (HTTP)
- 110 (POP3)
- 119 (NNTP)
- 161 (SNMP)
- 162 (SNMP Trap)

Port Triggering

Apply Cancel Help

3.5.9- This is the ' Port Triggering' window that will popup after you click on the ' Port Triggering' button. You need to fill in the information in the red circles.

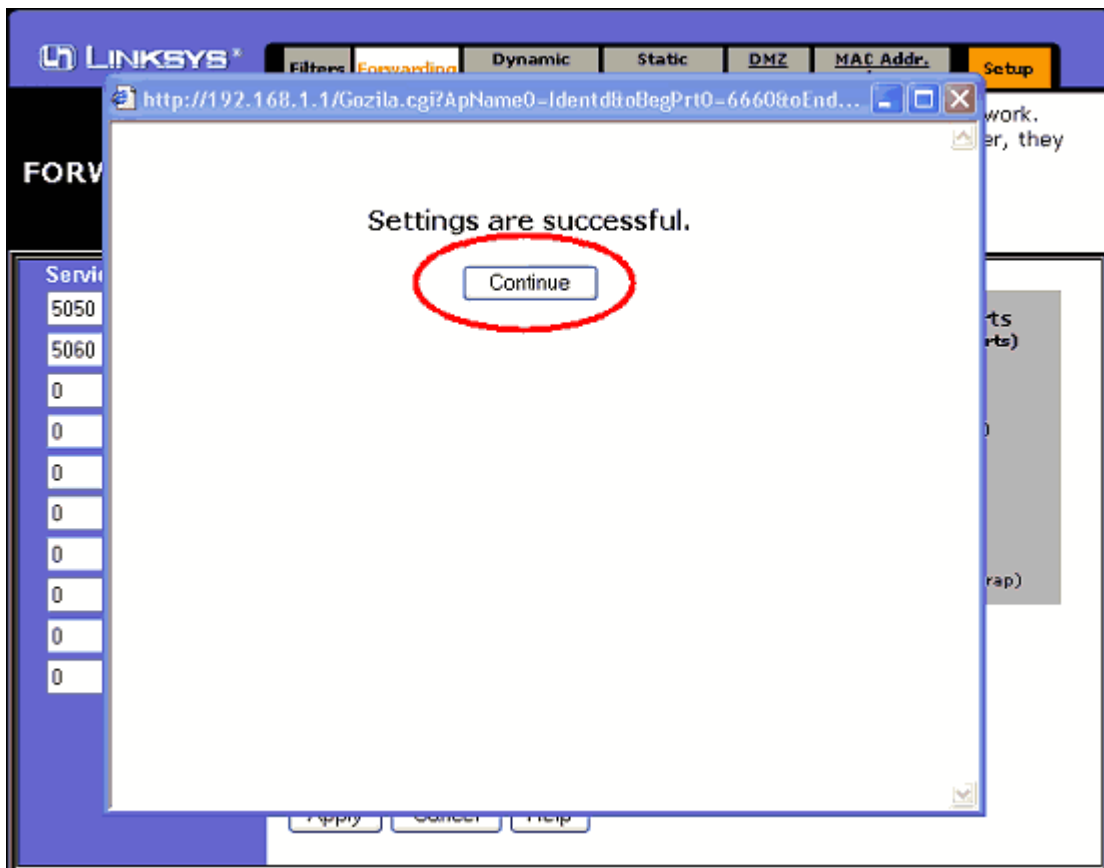
The Application name (1) can be any thing you want. We suggest you use 'Identd'. The 'Trigger Port Range' (2) contains the port numbers used by IRC servers. Ports from 6660 to 7000 cover the most commonly used ports on IRC servers. We recommend using those values. The 'Incoming Port Range' (3) is the 'Identd' port number. These must be 113 and 113. Once you've filled in the information, click on the 'Apply' button (4) shown circled in red.

Application Name	Trigger Port Range	Incoming Port Range
1: Identd	6660 ~ 7000	113 ~ 113
2:	0 ~ 0	0 ~ 0
3:	0 ~ 0	0 ~ 0
4:	0 ~ 0	0 ~ 0
5:	0 ~ 0	0 ~ 0
6:	0 ~ 0	0 ~ 0
7:	0 ~ 0	0 ~ 0
8:	0 ~ 0	0 ~ 0
9:	0 ~ 0	0 ~ 0
10:	0 ~ 0	0 ~ 0

4 Apply Cancel

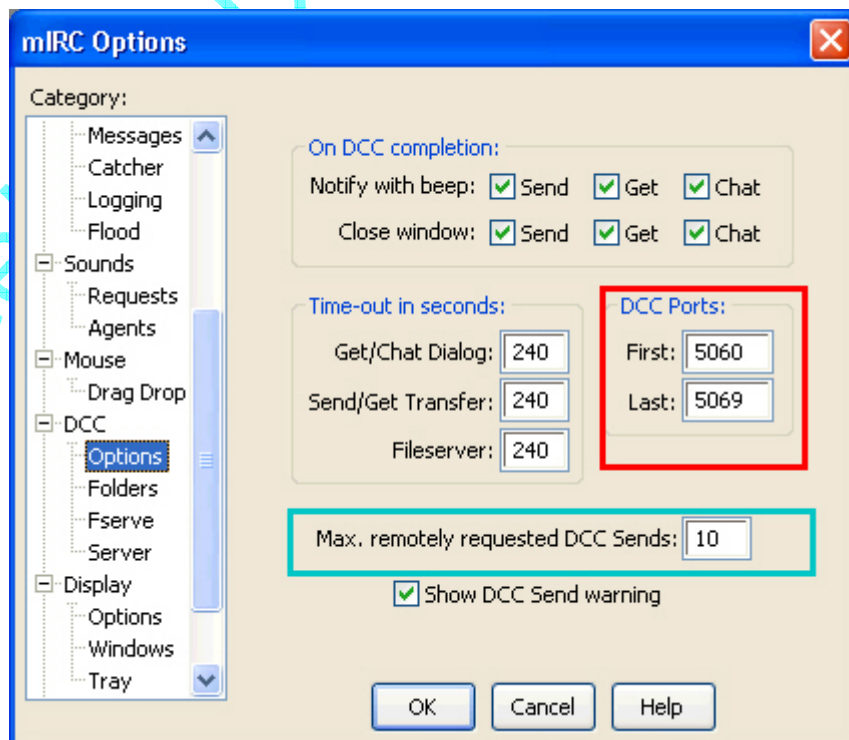
3.5.10- The image below shows the Settings Successful Window that pops up after clicking on 'Apply' button. You can now click on the 'Continue' button shown in the red circle. This will return to the 'Port Triggering' window. Click on the "X" in the top right corner of the 'Port Triggering' window to close it. At this point you can close your IE browser and you are finished configuring the router.

#Complete



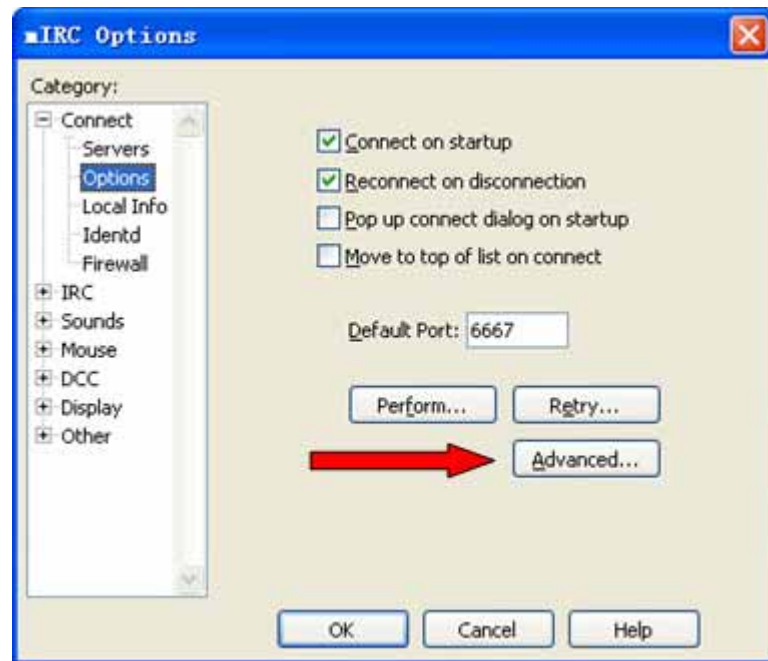
3.5.11- Once you are finished with your port forwarding, you need to make mIRC match which ports you have opened for DCC.

If you have mIRC [v6.12 or earlier](#), Select from menu 'Tools' ->'Options' -> 'DCC' -> 'Options'. The following window will be presented:

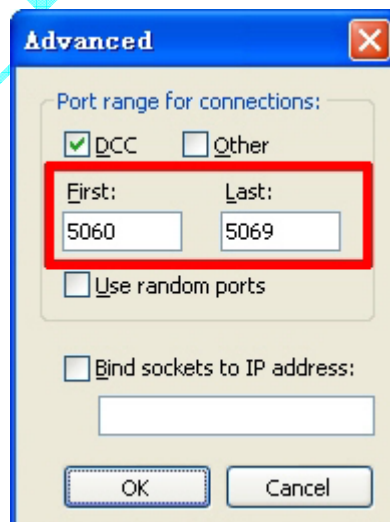


In the **red box** under 'DCC Ports', in these boxes, enter the port numbers you entered in the 'Port Triggers' section of the Router setup (refer back to Step 3.5.7). Next look at the number shown in the **green box** that says 'Max. remotely requested DCC Sends'. This number should be equal to or less than the number of ports you have setup for 'DCC Ports'. In this case it is '10', equal to the number of ports I have setup in the DCC Ports section. That's it. Click on 'OK' and you're ready to rock n' roll with mIRC.

If you have mIRC **v6.14 or later**. Select from menu 'Tools' ->'Options' ->'Connect' -> 'Options'. The following window will be presented:



Click on the 'Advanced...' button:

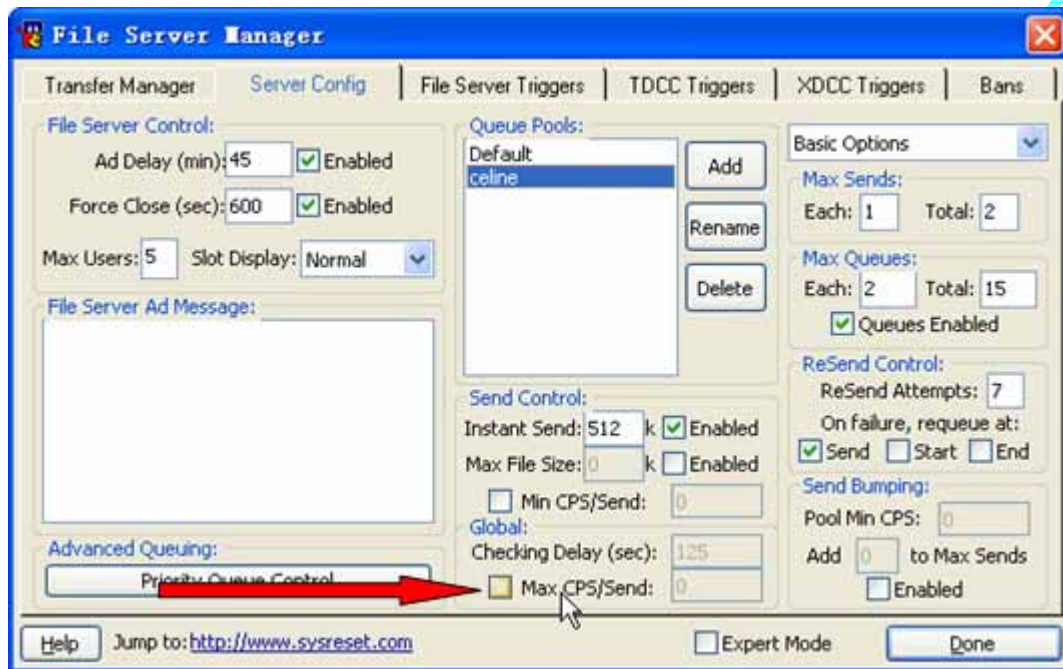


In the **red box** under 'Advanced', in these boxes, enter the port numbers you entered in the Port Triggers section of the Router setup (refer back to Step 3.5.7). That's it. Click on 'OK' and you're ready to rock n' roll with mIRC.

That's all there is to it. mIRC is now configured to work with Linksys Etherfast Router. For other routers, the steps are almost same.

### 3.6 Why the best send speed I can get is only 8 KB/s?

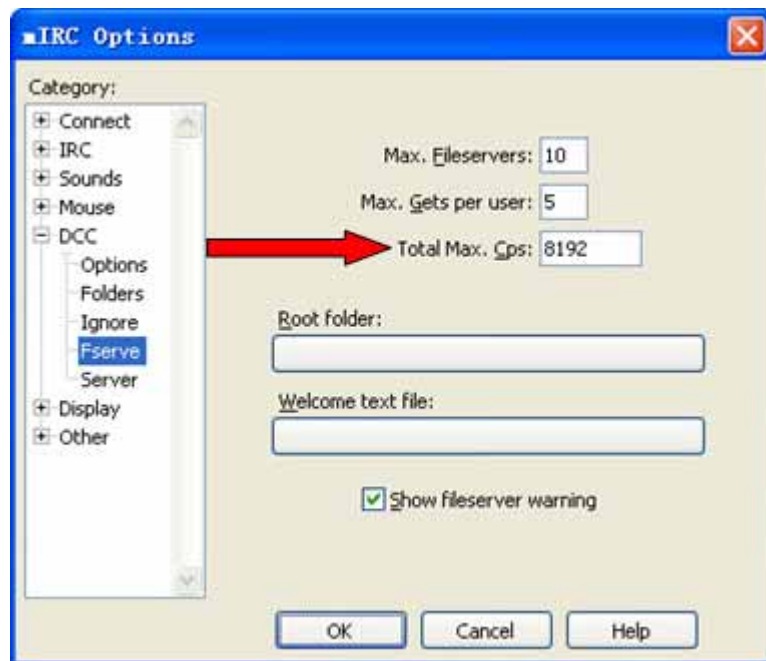
3.6.1- If you're using our pre-configured version of SysReset, check these options. Select from menu 'SysReset' -> 'File Server Manager' -> 'Server Config', and the following screen will appear:



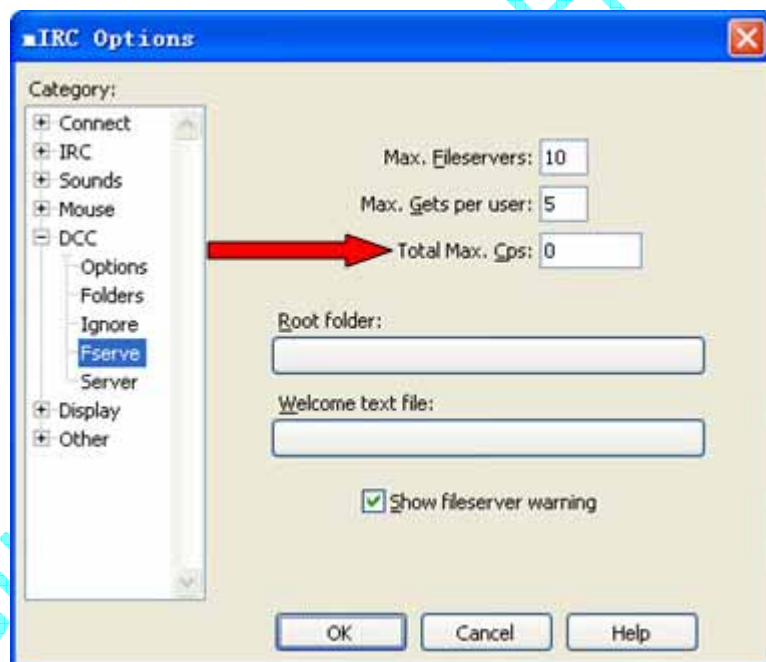
Select 'Queue Pools' to 'celine', then make sure 'Max CPS/Send' is unchecked. Click 'Done'.

If you're using OmneServe, check these options. Select from menu 'Tools' -> 'Options' -> 'DCC' -> 'Fserve', and the following screen will appear:

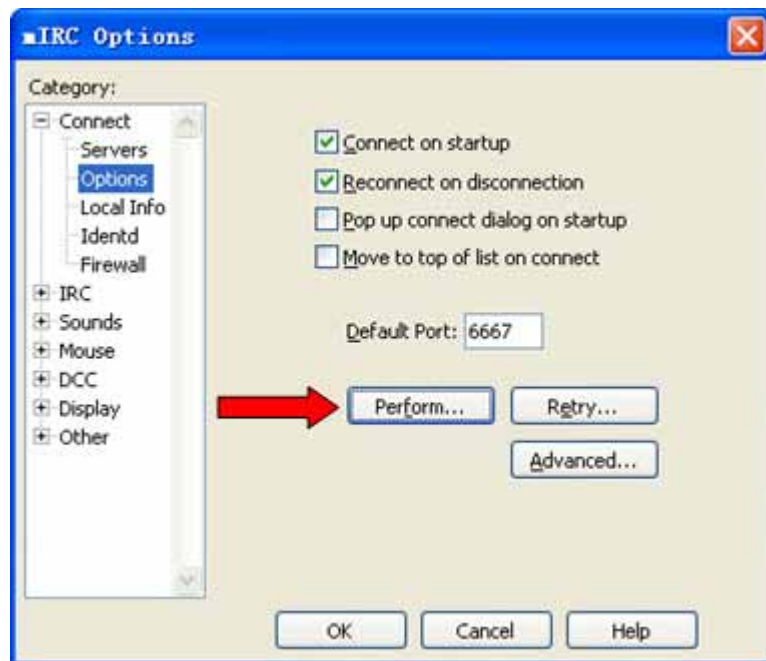
#Ceiling DCC



Make sure the 'Total Max. Cps' is not '8192'. Please set it to '0' means no speed limit.



3.6.2- Select from menu 'Tools' ->'Options' -> 'Connect' -> 'Options', the following window will be presented:



Click 'Perform' button, and the following screen will appear:



Check 'Enable perform on connect', and input these two lines '/pdcc on', '/fsend on' in 'Perform commands' as the above screen cap, click 'OK' to finish.

Written by Bellamy  
Thanks to mmanuzzi, koolan